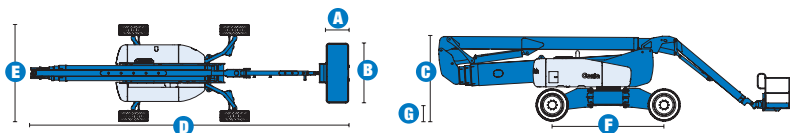


# Specifications



### MODEL Z™-135/70

MEASUREMENTS	Metric	US
Working height maximum*	43.15 m	141 ft
Platform height maximum	41.15 m	135 ft
Horizontal reach maximum - riser extended	18.03 m	59 ft 2 in
Horizontal reach maximum - riser retracted	21.26 m	69 ft 9 in
Up-and-over clearance maximum - riser extended	23.01 m	75 ft 6 in
	9.91 m	32 ft 6 in
	5.87 m	19 ft 3 in
Below ground reach	5.87 m	19 ft 3 in
A Platform length - 8 ft/6 ft model	91 cm / 76 cm	3 ft / 2 ft 6 in
B Platform width - 8 ft/6 ft model	2.44 m / 1.83 m	8 ft / 6 ft
C Height - stowed	3.07 m	10 ft 1 in
D Length - stowed	12.93 m	42 ft 5 in
E Width - axles extended	3.94 m	12 ft 11 in
	2.46 m	8 ft 1 in
F Wheelbase - axles extended	4.11 m	13 ft 6 in
	4.72 m	15 ft 6 in
G Ground clearance - centre	51 cm	1 ft 8 in

### PRODUCTIVITY

Lift capacity	272 kg	600 lbs
Platform rotation	160°	160°
Vertical jib rotation	110° (+70°/-40°)	110°
Turntable rotation	360° continuous	
Turntable tailswing - axles extended	79 cm	2 ft 7 in
Turntable tailswing	4.27 m	14 ft
Drive speed - stowed	4.8 km/h	3.0 mph
Drive speed - raised	30 cm/s	1 ft/s
Lift speed to full height	93 sec	93 sec
Gradeability**	45%	45%
Inside turning radius - axles extended	2.29 m	7 ft 6 in
Inside turning radius - axles retracted	5.51 m	18 ft 1 in
Outside turning radius - axles extended	5.64 m	18 ft 6 in
Outside turning radius - axles retracted	7.77 m	25 ft 6 in
Controls	12 V DC proportional	
Tyres (Foam filled)	445/65 D22.5 18 ply	

### POWER

Power source	Deutz TD 2011 L04i 4-cylinder diesel, 74 hp (55 kW) Perkins 804D-33T 4-cylinder turbo diesel, 83 hp (62 kW)	
Auxiliary power unit	12 V DC	12 V DC
Hydraulic tank capacity	246.1 L	65 gal
Fuel tank capacity	151.4 L	40 gal

### SOUND & VIBRATION LEVELS

Sound pressure level (ground workstation)	85 dBA	85 dBA
Sound pressure level (platform workstation)	74 dBA	74 dBA
Vibration	<2.5 m/s <sup>2</sup>	<8 ft 2 in/s <sup>2</sup>

### WEIGHT\*\*\*

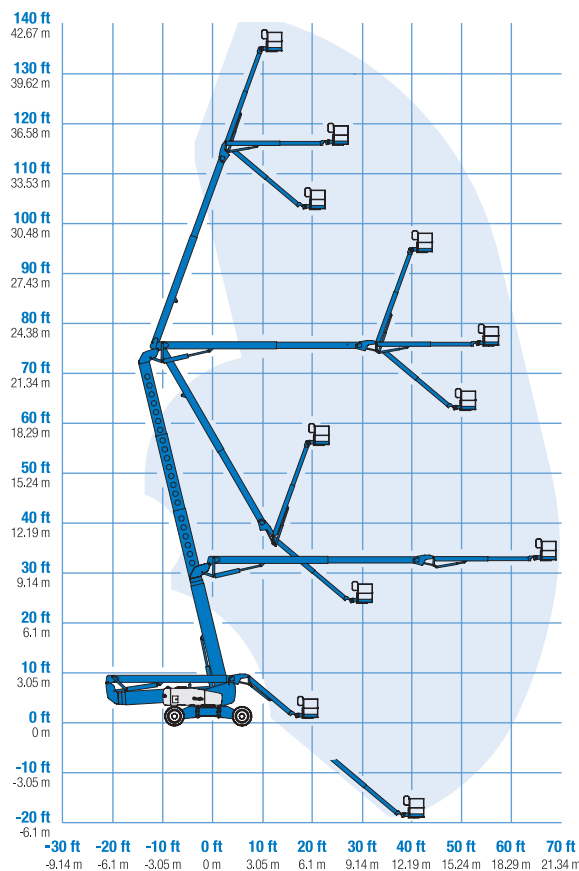
CE	20,366 kg	44,900 lbs
CE max	20,693 kg	45,620 lbs

### STANDARDS COMPLIANCE

EU Machinery Directive 2006/42/EC  
 EU Standard EN280:2001, A2:2009  
 EMC Directive 2004/108/EC EN 61000-6-2, EN 61000-6-4  
 EU Noise Directive 2000/14/EC EN ISO 3744

\* The metric equivalent of working height adds 2 m to platform height. U.S. adds 6 ft to platform height.  
 \*\* Gradeability applies to driving on slopes. See Operator's Manual for details regarding slope ratings.  
 \*\*\* Weight will vary depending on options and/or country standards.

### RANGE OF MOTION Z™-135/70



## Features

### EASILY CONFIGURED TO MEET YOUR NEEDS

#### PLATFORM OPTIONS

- Steel 2.44 m (8 ft) (standard)
- Steel 1.83 m (6 ft)
- 2.44 m (8 ft) tri-entry platform

#### JIB

- 3.66 to 6.10 m (12 to 20 ft) Jib-Extend™

#### POWER

- Deutz diesel 74 hp (55 kW)
- Perkins diesel 83 hp (62 kW)

#### DRIVE/STEER

- 4 x 4 (standard)
- 4 - wheel steer (standard)

#### TYRE

- Rough terrain, foam-filled (standard)

### STANDARD FEATURES

#### MEASUREMENTS

- 43.15 m (141 ft) working height
- 21.26 m (69 ft 9 in) horizontal reach
- 23.01 m (75 ft 6 in) up-and-over clearance
- Up to 272 kg (600 lb) lift capacity

#### PRODUCTIVITY

- X-Chassis™ extendable axles
- 3.66 to 6.10 m (12 to 20 ft) Jib-Extend™
- Self-levelling platform
- Hydraulic platform rotation
- Fully proportional Hall effect controls
- Thumb rocker steer
- On-board full diagnostics and engine monitoring display
- ALC 1000 electronic control system
- Hydraulic oil cooler
- Drive enable
- AC power cord to platform
- Horn
- Hour meter
- Tilt alarm
- Descent alarm
- Alarm package (flashing beacon & travel alarm)
- 360° continuous turntable rotation
- Four wheel high angle steer
- Four steering modes: front, rear, crab and coordinated
- Four wheel brakes
- Full-time positive traction 4WD
- Adjustable foot switch timeout
- Two-speed wheel motors
- Certified load sensor
- Configurable controls to limit lift height to 27.74 m (91 ft)
- Engine status display
- Certified load sensor

### STANDARD FEATURES cont.

#### POWER

- All engines are emission compliant
- 12 V DC auxiliary power
- Air intake pre-cleaner (diesel only)
- Engine monitoring display
- Swing-out engine tray
- Deutz intake air heater



### OPTIONS & ACCESSORIES

#### PRODUCTIVITY

- Platform swing gate
- Half-mesh platform inserts with swing gate\*
- Platform top auxiliary rail
- Weld leads to platform (N/A with Deluxe Hostile environment package)
- Air line to platform
- Power to platform (incl. plug, socket and ground fault interrupt leakage on request)
- Light package: 2 chassis mounted drive lights, 2 platform mounted work lights
- Basic Hostile environment kit: cylinder bellows, boom wiper seals, platform and ground control box cover
- Deluxe Diesel/ Dual-fuel Hostile environment kit (adds to basic kit: center turntable shield, ring gear guard, tail pipe guard, engine cover flaps and air pre-cleaner)
- Low temperature cut-out module
- Fire resistant hydraulic oil
- Biodegradable hydraulic oil
- Aircraft protection kit: platform foam padding & padded disable system\*\*
- Tool tray
- Dual axis joystick steering
- Platform work lights
- Lockable platform control box cover

#### POWER

- Engine heater
- AC generator packages (110V/60Hz or 220V/50Hz)
- Cold weather package
- Refinery kit (spark arrester and electric or mechanical Chalwyn valve)

\*Not available on tri-entry platform  
\*\*1.83 m (6 ft) platform only

#### Enquiries from Europe:

Tel: +31 165 519 361  
Fax: +31 165 511 148  
Email: AWP-InfoEurope@terex.com

#### Offices:

##### France

Tel: +33 (0)2 37 26 09 99  
Fax: +33 (0)2 37 26 09 98

##### Germany

Tel: +49 (0)4221 491 810  
Fax: +49 (0)4221 491 820

##### Spain

Tel: +34 93 572 50 90  
Fax: +34 93 572 50 91

##### Scandinavia

Tel: +46 31 57 51 00  
Fax: +46 31 57 51 04

##### The Netherlands

Tel: +31 165 519 361  
Fax: +31 165 511 148

##### UK

The Maltings  
Wharf Road  
Grantham NG31 6BH  
UK  
Tel: +44 (0)1476 584333  
Fax: +44 (0)1476 584334

##### Middle East

Tel: +971 4 399 0381  
Fax: +971 4 399 0382  
Email: AWP.Infome@terex.com

##### Russia & CIS countries

Tel: +7 495 660 32 30  
Fax: +7 495 660 32 29  
Email: info@terexrus.ru

#### Corporate Headquarters:

##### United States

18340 NE 76th Street  
P.O. Box 97030  
Redmond, WA  
USA 98073-9730  
Tel: +1 425 881-1800  
Fax: +1 425 883-3475

#### Distributed By: