

314E CR

Hydraulic Excavator



Engine

Engine Model	Cat® C4.4 ACERT™	
Net Power – SAE J1349	67 kW	89 hp

Drive

Maximum Travel Speed	5.4 km/h	3.4 mph
Maximum Drawbar Pull	113 kN	25,400 lbf

Weight

Operating Weight	14 800 kg	32,600 lb
------------------	-----------	-----------

If you are looking for a compact, productive, and fuel-efficient 14 metric ton machine, you will find it in the all new 314E CR. Built to meet today's U.S. EPA Tier 4 Interim emission standards, the 314E makes an excellent choice for people who need a well-balanced and versatile utility machine. In fact, this new model comes equipped with several new features and benefits that will please both you and your operators.

Contents

Compact Radius4
 Engine5
 Hydraulics6
 Operator Station.....8
 Structures & Undercarriage9
 Work Tools.....10
 Front Linkage12
 Integrated Technologies.....13
 Serviceability14
 Safety15
 Complete Customer Care.....16
 Sustainability17
 Specifications.....18
 Standard Equipment.....32
 Optional Equipment.....33
 Notes.....34





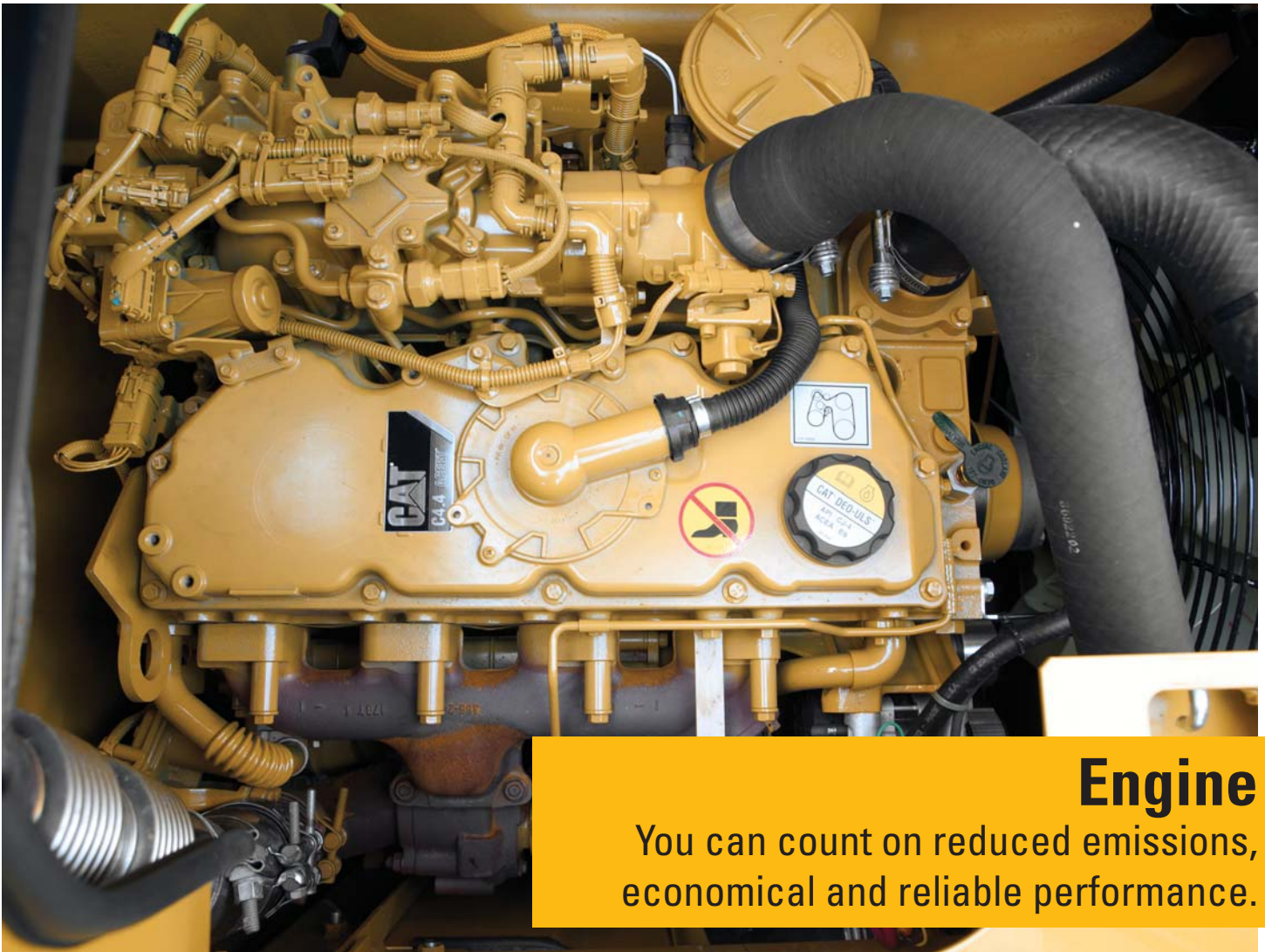
Compact Radius

You can have flexibility and peace of mind in tight quarters.



If your work space is restricted, the 314E CR makes an ideal choice because it can get up close to new residential construction, buildings, fences, hillsides, or any other “crowded” environment with ease.

When rotated 90 degrees and working over the side, the 314E CR’s counterweight extends only a bit beyond the track width and doesn’t exceed the length of the track at all. This significantly reduces the risk of your operator damaging the machine and surrounding structures in full swing, which makes for a safer work environment and lower owning and operating costs for your business.



Engine

You can count on reduced emissions,
economical and reliable performance.

The Cat C4.4 ACERT engine is built to meet your demanding needs all day every day. There is no interruption to your job process as our new regeneration system works automatically with no operator intervention required.

Power Modes

The 314E features two power modes: High power mode is when you need maximum production; economy mode is when you need to balance performance with fuel economy.

Two additional fuel-saving features are on demand engine power and engine idle shutdown. On demand engine power keeps speed low during light loading and idling and automatically adjusts speed up when it senses a heavier load; engine idle shutdown automatically shuts the engine off when it's been idling for more than a specified amount of time that you set, which can save you significant amounts of fuel, reduce your emissions, and even reduce your accumulated service hours, which will extend service intervals and improve re-sale value.

Biodiesel-Ready Fuel System

The C4.4 ACERT engine runs on ultra-low-sulfur diesel fuel, and you have added flexibility of running on B20 biodiesel fuel that meets ASTM 6751 standards. Just fill it up and go.

Hydraulics

You can move dirt, rock, and debris with speed, precision, and efficiency.





Hydraulic System

One of the biggest contributors to your productivity and fuel savings is a well-designed hydraulic system, and this is where Cat excavators stand apart. The 314E CR is loaded with several unique features that will put more power to the ground with less money out of your pocket.

Pumps and Valves

The main control valve is built to work with any tool, allowing you to take on multiple tasks with one machine. The main pumps are located side by side and are driven directly by the engine for the highest level of efficiency to reduce your fuel costs.

Boom Regeneration

Electric boom regeneration results in less pressure loss, higher controllability, more productivity, and lower operating costs for you; it works by reusing the flow of oil that travels from the head of the boom cylinder to the rod end of the boom cylinder during your operator's everyday "boom down" operation. During boom regeneration, engine speed is controlled to be low in order to save extra oil flow from going to the boom cylinders, which saves energy.

Operator Station

Your operators will enjoy the incredibly quiet and comfortable cab.



Monitor

Your operators can keep safely focused on the job at hand with a high-resolution LCD monitor that is programmable in 44 languages to support today's diverse workforce. It also projects the image from an available rearview camera, further increasing the safety and productivity of your job site.



Seats

Mechanical and air suspension seat options with heated and air-cooled availability give operators all the comfort they need for a long day of work. All seats include a reclining back, upper and lower seat slide adjustments, and height and tilt angle adjustments.

Controls

Your operators can adjust the right and left joysticks for individual preferences, helping the operator become more comfortable, more productive, and more alert.

Power Supply and Auxiliary Audio Port

To keep your operators happy, comfortable and connected, one 12-volt power supply is located on the radio near key storage areas for charging electronic devices such as an MP3 player and cell phone. An auxiliary port allows your operators to plug and play MP3 audio through the cab's speakers.

Storage

Your operators have storage spaces located in the rear. A dedicated space near the auxiliary power supply will hold an MP3 player and cell phone. The drink holder accommodates large mugs with handles, and a shelf behind the seat stores large lunch or toolboxes.

Automatic Climate Control

An automatic climate control system features seven air outlets with filtered ventilation to make your operators comfortable in either hot or cold climates.

Structures & Undercarriage

You can take on a variety of tough tasks with this built-to-last machine.



Frame

You can expect excellent quality, reliability, and durability with the 314E CR's reinforced lower and upper frames. Both are built to handle a hard day's work over and over again.

Undercarriage

Long undercarriage supports any type of work you can do with a 14 metric ton machine. The track rollers are a double solid-pin-type design to improve reliability; an optional two-piece guiding guard helps maintain track alignment and improves the machine's overall performance.

Counterweight

The 314E CR has two counterweight options – 3.06 and 3.56 mt (3.4 and 3.9 t) – to optimally match your machine to the task at hand, whether it's doing light trenching or heavy lifting. With integrated links, you can also easily – and safely – remove the counterweight for maintenance or shipping.



Work Tools

You can dig, hammer, rip, and cut with confidence.



You can extend the versatility and performance of your machine with the full lineup of Cat work tools. Each tool equips your machine to perform the many different tasks found at a variety of job sites.

Couplers: Quick Tool Changes

Imagine the productivity you'll achieve with a quick coupler. Combine a robust coupler with a common work tool inventory that can be shared between same size machines and you'll get performance and flexibility on every job. The Cat Center-Lock™ pin grabber coupler features a patented locking system and highly visible lock. You can clearly see when the coupler is engaged or disengaged from the attachment.

Work Tools: Cut, Crush, Pulverize and Load

No matter your specialty, Caterpillar provides tools that are perfectly matched to get the most out of your Cat machine – quickly and efficiently. Field-installed hydraulic kits are uniquely designed to integrate any Cat Work Tool with your 314E CR.

Buckets: Dig, Move, Load

Cat buckets are designed to fill efficiently so you notice a fast, smooth cycle, which means high productivity each time you dig. Wear characteristics of general duty, heavy duty, and severe duty buckets give you solid performance in a wide variety of material abrasions. Ditch cleaning and other specialty buckets are available when needed.

GRAB, SORT, LOAD



Pro Series Hydraulic Thumbs



Stiff Link Thumbs



Contractors' Grapples



Trash Grapples

DIG & PACK



Ditch Cleaning and Tilt Buckets



General Duty Buckets



General Duty, Wide Tip Buckets



Severe Duty Buckets



Vibratory Plate Compactors

SWAP TOOLS



Center-Lock™ Pin Grabber Coupler

CUT, CRUSH, BREAK & RIP



Scrap & Demolition Shears



Hydraulic Hammers



Front Linkage

You'll experience a long service life even in the harshest of conditions.

Your uptime and service intervals are increased with durable and reliable booms, sticks, and linkage pins. Each boom and stick is built with internal baffle plates for additional strength, and each undergoes ultrasound inspection to ensure you get the durability and reliability you expect for any tough application.

Booms

Two types of booms are available to meet the variety of tasks you take on in a given day. A reach boom offers you excellent all-around versatility and a large working envelope; a power offset boom allows your operator to stay in the same position to load and dump, which increases productivity when your team is working in narrow, restricted space. A unique bucket-to-cab avoidance feature is also included to ensure safe operation.

Sticks

Sticks are matched to the booms. The R3.0 m (9'10") stick is best for when you need deep trenching, longer reach, and top truck loading capabilities. The R2.5 m (8'2") stick provides greater breakout force and increases productivity when you primarily plan on using hydro-mechanical work tools. The R2.1 m (6'11") stick combines with the power offset boom to deliver excellent breakout force and cycle speed in those tough-to-reach places. Your Cat dealer can help you pick the best configuration for your business.

Integrated Technologies

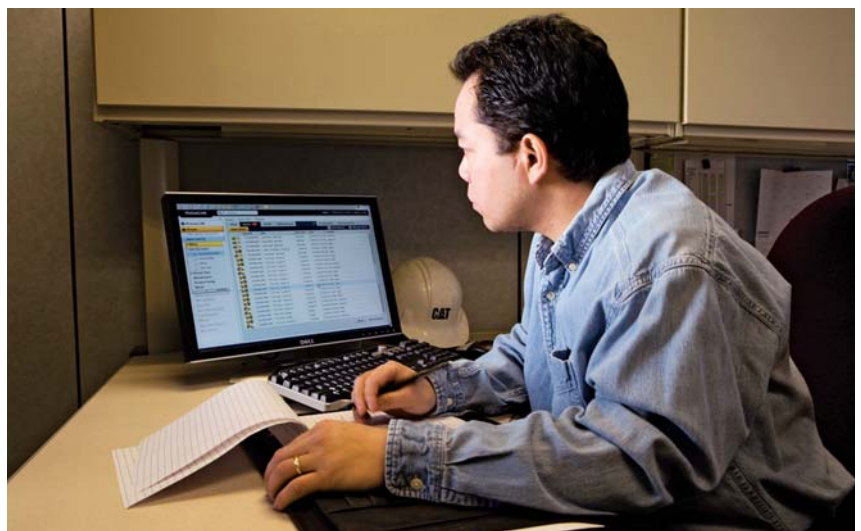
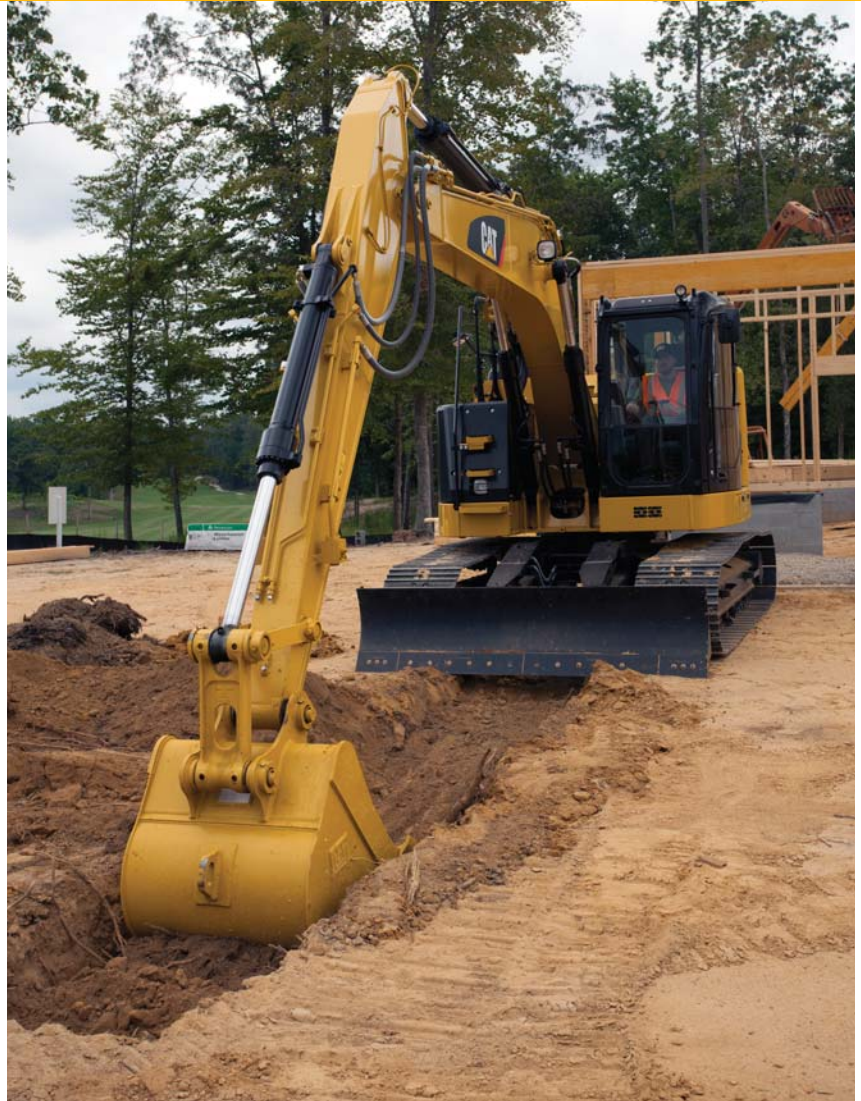
You can make your team's work much easier and more efficient.

Cat Grade Control Depth and Slope

Cat Grade Control Depth and Slope is a standalone factory offering that allows your operator to reference a site elevation and input simple elevation and slope targets into the display to give them real-time bucket tip position through the cab monitor. This allows them to cut or fill to the target elevation the first time, which minimizes the need and cost for traditional grade checking. It also enhances job site safety and helps your team complete jobs quicker with fewer cycles, which means you'll save money on fuel.

Cat Product Link™

You can monitor and improve your fleet management with optional Cat Product Link. The integrated system reports events, diagnostic codes, hours, fuel consumption, location, and other pieces of detailed machine information to the secured web-based application called Vision Link™. The powerful tools within Vision Link communicate with you and your authorized Cat dealer to allow them to help you avoid downtime and better maintain your fleet.



Serviceability

You can depend on safe, fast, and easy access.



Ground-Level Compartments

Your service technicians have ground-level access to the radiator, pump, and air cleaner compartments through wide service doors, making it easy for them to reach, check, and replace fluids and filters.

Cooling System

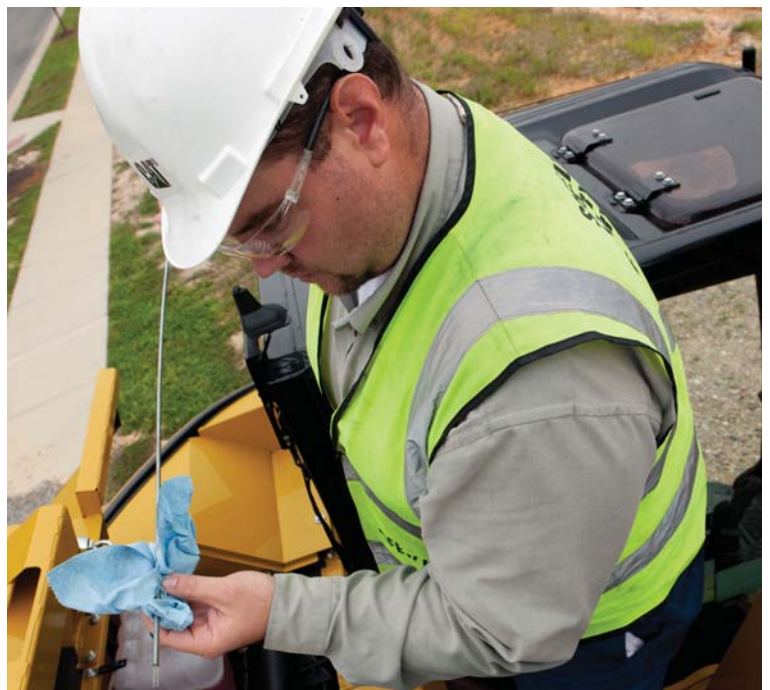
The cooling package features an improved oil cooler and engine radiator design mounted side by side and the air-to-air aftercooler and A/C condenser mounted in front. The radiator uses an aluminum square wave fin to prevent clogging with the other components positioned to make cleaning cores easier – a major service convenience.

Other Service Benefits

The engine oil dipstick is conveniently located in the front of the engine compartment.

The fuel tank's remote drain cock makes it easy and simple to remove water and sediment during routine maintenance.

Overfilling the fuel tank is significantly reduced with an integrated fuel level indicator.



Safety

Several built-in features will help protect your people.



Roll-Over Protective Structure (ROPS) Cab

Your operators will benefit from the enhanced protection of a ROPS-certified cab. It is also built to accommodate a Falling Object Guard Structure (FOGS) for industrial applications.

Sound Proofing

Roof lining and sealing make your operator's sound experience inside the cab comparable to any of today's top pickup trucks.

Anti-Skid Plates

Your operator and service technicians' slipping hazards are reduced with anti-skid plates on the surface of the upper structure and the top of the storage box area.

Steps, Hand and Guard Rails

Your service technicians can work securely on the machine with extended hand and guardrails to the upper deck and steps on the track frame and storage box.

Time Delay Lights

The cab and boom lights can be programmed to stay on for up to 90 seconds after the engine has been turned off to help your operators safely exit the machine.

High Intensity Discharge (HID) Lights

You can upgrade to HID for greater visibility in low-light conditions.

Windows

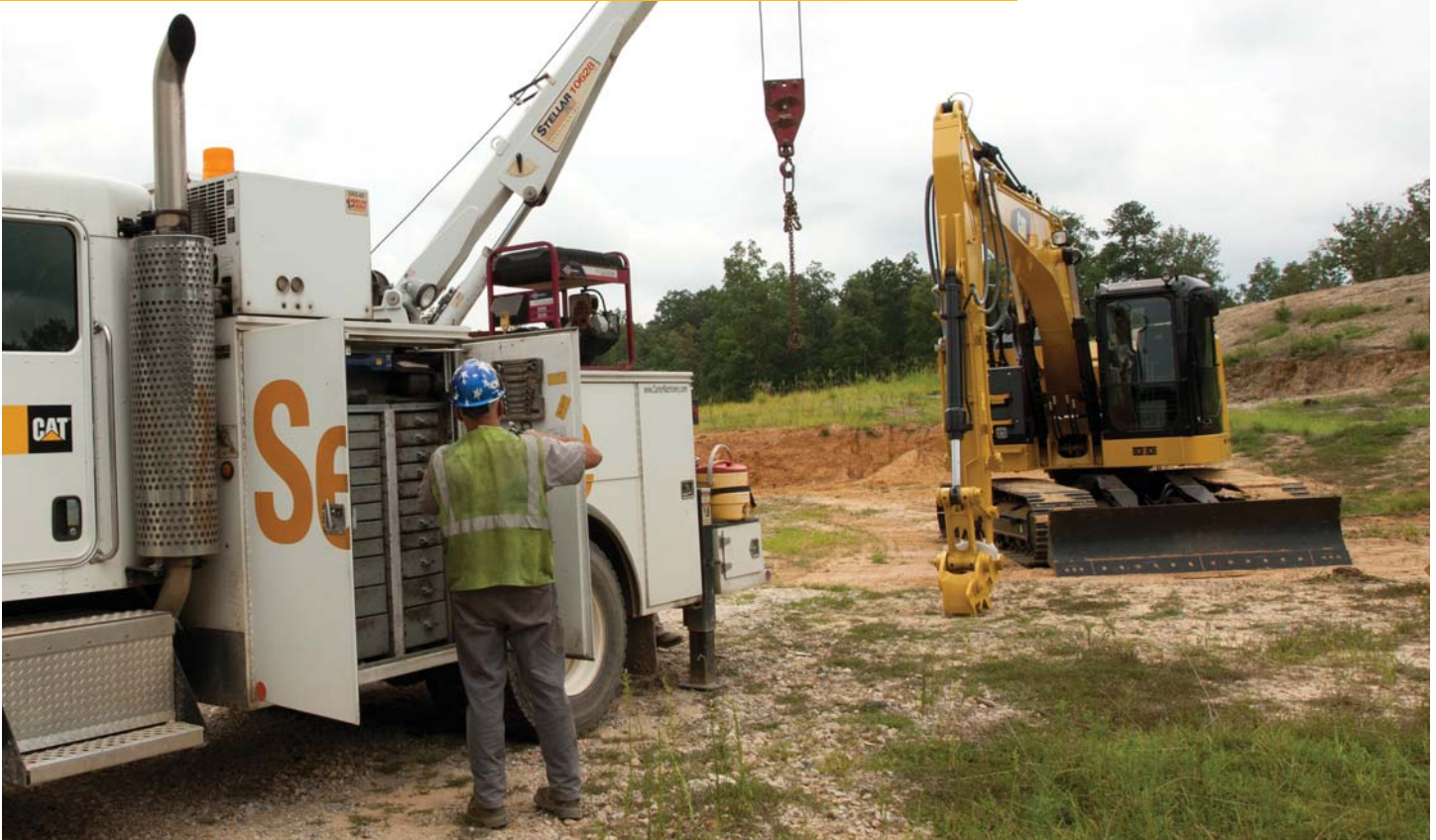
You can easily store both the upper and lower window in cab. You also have great overhead visibility and lighting with a large skylight.

Rearview Camera

Your operator has a clear view behind the machine with an optional rearview camera. The image projects through the standard cab monitor.

Complete Customer Care

Your Cat dealer will support you like no other.



Product Support

You can maximize your machines' uptime with the Cat worldwide dealer network. You can also decrease your repair costs by utilizing Cat remanufactured components while contributing to sustainable development.

Machine Selection

What are your job requirements and machine attachments? What production do you need? Your Cat dealer can provide recommendations to help you make the right machine configuration.

Purchase

You can ensure lower owning and operating costs by utilizing dealer services and financing options.

Customer Support Agreements

Cat dealers offer a variety of customer support agreements and work with you to develop a plan to meet your specific needs. These plans can cover the entire machine, including attachments, to help protect your investment.

Operation

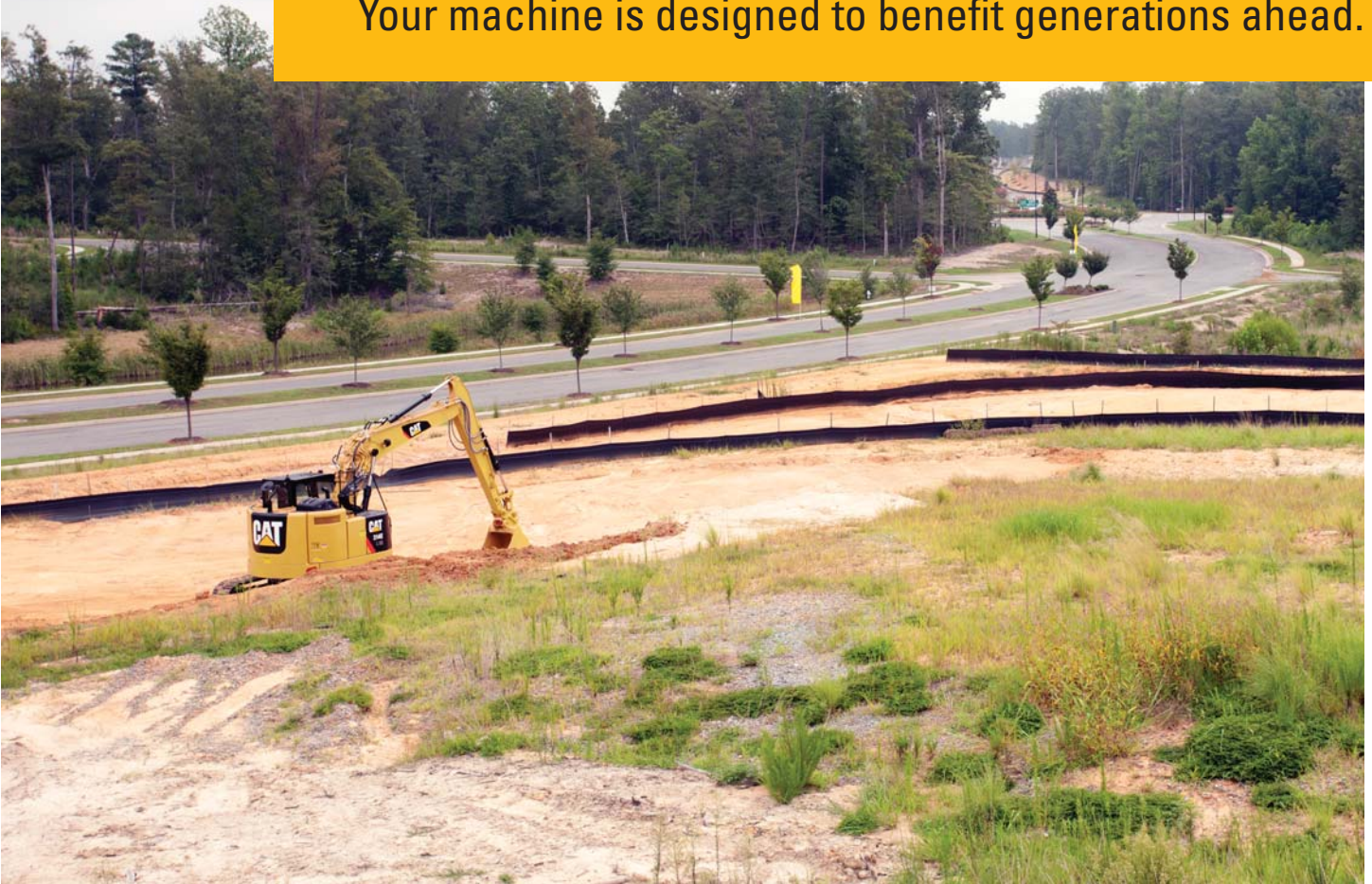
You can boost your profits by improving operating techniques. Your Cat dealer has videos, literature, and other ideas to help you increase productivity. Caterpillar also offers simulators and certified operator training to help maximize the return on your investment.

Replacement

Repair, rebuild, or replace? Your Cat dealer can help you evaluate the cost involved so you can make the best choice for your business.

Sustainability

Your machine is designed to benefit generations ahead.



- The 314E CR is an efficient, productive machine that's designed to conserve our natural resources for generations ahead.
- The C4.4 ACERT engine ensures you meet U.S. EPA Tier 4 Interim emission standards.
- The 314E CR has the flexibility of running on either ultra-low-sulfur diesel (ULSD) fuel with 15 ppm of sulfur or less or biodiesel (B20) fuel blended with ULSD that meets ASTM 6751 standards.
- An overfill indicator rises when the fuel tank is full to help your service technicians avoid spilling.
- An unique engine oil filter eliminates the need for painted metal cans and aluminum top plates. The cartridge-style spin-on housing enables the internal filter to be separated and replaced; the used internal element can be incinerated to help reduce waste.

314E CR Hydraulic Excavator Specifications

Engine

Engine Model	Cat C4.4 ACERT	
Gross Power – SAE J1995	71 kW	95 hp
Net Power – SAE J1349	67 kW	89 hp
Bore	105 mm	4.1 in
Stroke	127 mm	5.0 in
Displacement	4.4 L	270 in ³

Weight

Operating Weight	14 800 kg	32,600 lb
------------------	-----------	-----------

Hydraulic System

Main System – Maximum Flow (Total)	254 L/min	67 gal/min
Swing System – Maximum Flow	127 L/min	34 gal/min
Maximum Pressure – Equipment	30 500 kPa	4,420 psi
Maximum Pressure – Power Offset Boom (optional)	29 900 kPa	4,340 psi
Maximum Pressure – Travel	35 000 kPa	5,080 psi
Maximum Pressure – Swing	23 000 kPa	3,340 psi
Pilot System – Maximum Flow	21.9 L/min	4.8 gal/min
Pilot System – Maximum Pressure	4120 kPa	600 psi
Boom Cylinder – Bore	110 mm	4.3 in
Boom Cylinder – Stroke	1000 mm	39.4 in
Stick Cylinder – Bore	120 mm	4.7 in
Stick Cylinder – Stroke	1197 mm	47.1 in
Bucket Cylinder – Bore	100 mm	3.9 in
Bucket Cylinder – Stroke	939 mm	37.0 in

Drive

Maximum Travel Speed	5.4 km/h	3.4 mph
Maximum Drawbar Pull	113 kN	25,400 lbf

Swing Mechanism

Swing Speed	11.5 rpm
Swing Torque	30.9 kN·m 22,790 lbf-ft

Service Refill Capacities

Fuel Tank Capacity	178 L	47.0 gal
Cooling System	28 L	7.40 gal
Engine Oil (with filter)	13.5 L	3.6 gal
Swing Drive (each)	2.4 L	0.6 gal
Final Drive (each)	3 L	0.8 gal
Hydraulic System (including tank)	160 L	42.3 gal
Hydraulic Tank	84 L	22.2 gal

Track

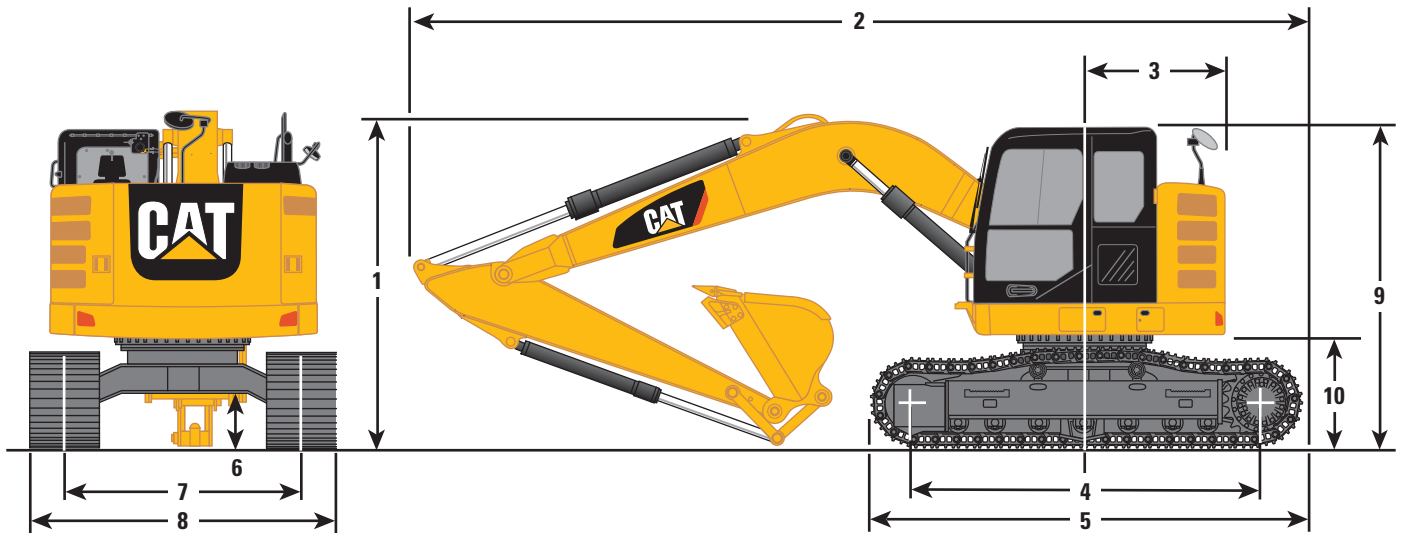
Long Undercarriage	
Number of Shoes (each side)	46 pieces
Number of Track Rollers (each side)	7 pieces
Number of Carrier Rollers (each side)	2 pieces

Sound Performance

ISO 6396	
Operator Noise (Closed)	69 dB(A)
ISO 6395	
Spectator Noise	100 dB(A)

Dimensions

All dimensions are approximate.



Stick	Reach Boom 4.65 m (15'3")				Power Offset Boom			
	R3.0 m (9'10")		R2.8 m (9'2")		R2.5 m (8'2")		2.13 m (6'11")	
1 Shipping Height*	3000 mm	9'10"	3030 mm	9'11"	3000 mm	9'10"	3000 mm	9'10"
Shipping Height at Boom Top	2750 mm	9'0"	3030 mm	9'11"	2820 mm	9'3"	2780 mm	9'1"
Shipping Height with Guard Rail	3000 mm	9'10"	3000 mm	9'10"	3000 mm	9'10"	3000 mm	9'10"
Shipping Height with Top Guard	2950 mm	9'8"	2950 mm	9'8"	2950 mm	9'8"	2950 mm	9'8"
2 Shipping Length								
Long Undercarriage	7450 mm	24'5"	7440 mm	24'5"	7450 mm	24'5"	7560 mm	24'10"
Long Undercarriage with Blade	8010 mm	26'3"	8010 mm	26'3"	8010 mm	26'3"	8120 mm	26'8"
3 Tail Swing Radius								
Standard Counterweight	1490 mm	4'11"	1490 mm	4'11"	1490 mm	4'11"	1490 mm	4'11"
Heavy Counterweight	1530 mm	5'0"	1530 mm	5'0"	1530 mm	5'0"	1530 mm	5'0"
4 Length to Center of Rollers	3040 mm	10'0"	3040 mm	10'0"	3040 mm	10'0"	3040 mm	10'0"
5 Track Length	3750 mm	12'4"	3750 mm	12'4"	3750 mm	12'4"	3750 mm	12'4"
6 Ground Clearance	440 mm	1'5"	440 mm	1'5"	440 mm	1'5"	440 mm	1'5"
7 Track Gauge	1990 mm	6'6"	1990 mm	6'6"	1990 mm	6'6"	1990 mm	6'6"
8 Transport Width								
500 mm (20") Shoes	2490 mm	8'2"	2490 mm	8'2"	2490 mm	8'2"	2490 mm	8'2"
600 mm (24") Shoes	2590 mm	8'6"	2590 mm	8'6"	2590 mm	8'6"	2590 mm	8'6"
700 mm (28") Shoes	2690 mm	8'10"	2690 mm	8'10"	2690 mm	8'10"	2690 mm	8'10"
9 Cab Height	2810 mm	9'3"	2810 mm	9'3"	2810 mm	9'3"	2810 mm	9'3"
Cab Height with Top Guard	2950 mm	9'8"	2950 mm	9'8"	2950 mm	9'8"	2950 mm	9'8"
10 Counterweight Clearance**	860 mm	2'10"	860 mm	2'10"	860 mm	2'10"	860 mm	2'10"

*Including shoe lug height.

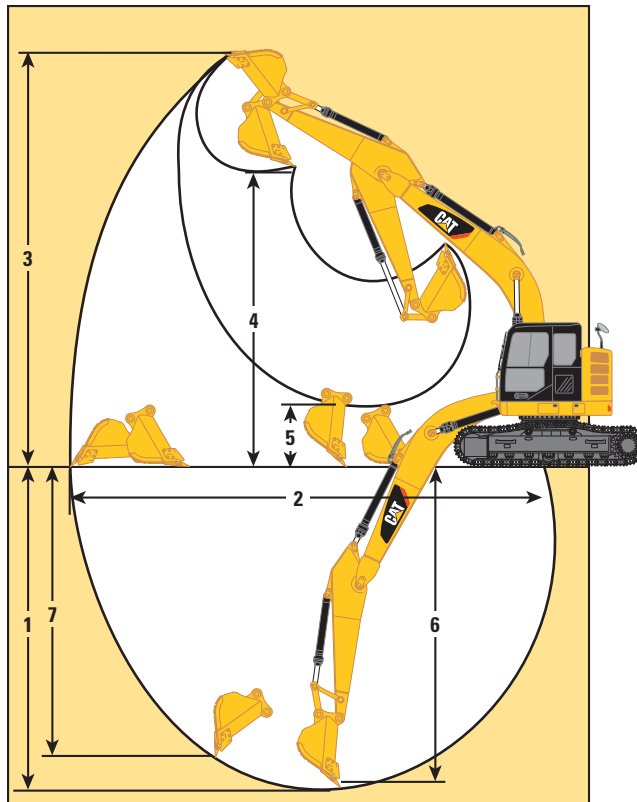
**Without shoe lug height.

All dimensions were calculated with 900 mm (35") wide GD bucket with 0.53 m³ (0.69 yd³) capacity and 1200 mm (3'11") tip radius.

314E CR Hydraulic Excavator Specifications

Working Ranges

All dimensions are approximate.

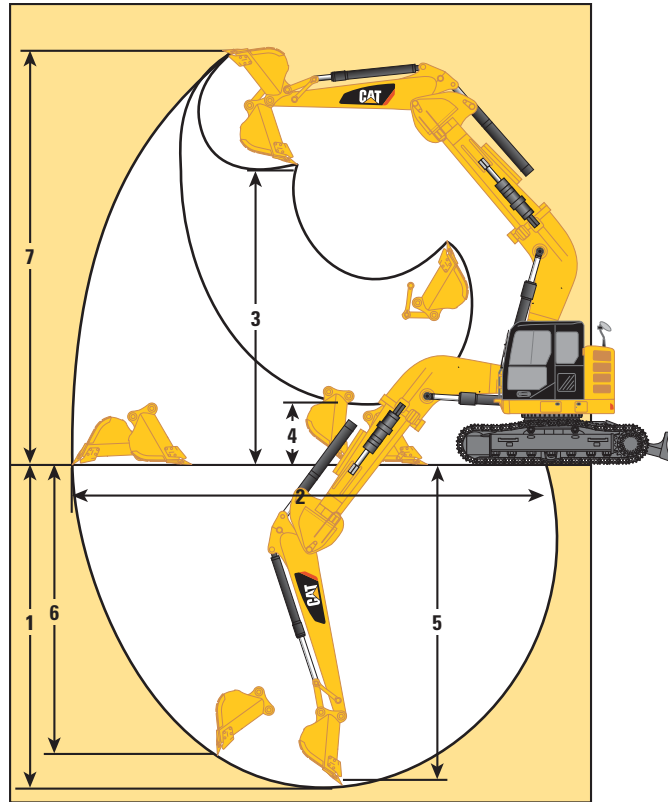


Stick	Reach Boom 4.65 m (15'3")					
	R3.0 m (9'10")		R2.8 m (9'2")		R2.5 m (8'2")	
1 Maximum Digging Depth	5950 mm	19'6"	5750 mm	18'10"	5450 mm	17'11"
2 Maximum Reach at Ground Level	8680 mm	28'6"	8490 mm	27'10"	8230 mm	27'0"
3 Maximum Cutting Height	9640 mm	31'8"	9480 mm	31'1"	9310 mm	30'7"
4 Maximum Loading Height	7190 mm	23'7"	7030 mm	23'1"	6860 mm	22'6"
5 Minimum Loading Height	2060 mm	6'9"	2240 mm	7'4"	2500 mm	8'2"
6 Maximum Depth Cut for 2440 mm (8'0") Level Bottom	5660 mm	18'7"	5460 mm	17'11"	5160 mm	16'11"
7 Maximum Vertical Wall Digging Depth	5280 mm	17'4"	5090 mm	16'8"	4880 mm	16'0"

All dimensions were calculated with 900 mm (35") wide GD bucket with 0.53 m³ (0.69 yd³) capacity and 1200 mm (3'11") tip radius.

Working Ranges

All dimensions are approximate.



Stick	Power Offset Boom					
	2.13 m (6'11")*		2.13 m (6'11")		2.13 m (6'11")**	
1 Maximum Digging Depth	4510 mm	14'10"	4840 mm	15'11"	4480 mm	14'8"
2 Maximum Reach at Ground Level	6890 mm	22'7"	7270 mm	23'10"	6850 mm	22'6"
3 Maximum Cutting Height	8110 mm	26'7"	8450 mm	27'9"	8070 mm	26'7"
4 Maximum Loading Height	5680 mm	18'8"	6020 mm	19'9"	5640 mm	18'6"
5 Minimum Loading Height	2330 mm	7'8"	2680 mm	8'10"	2290 mm	7'6"
6 Maximum Depth Cut for 2440 mm (8'0") Level Bottom	4110 mm	13'6"	4450 mm	14'7"	4080 mm	13'5"
7 Maximum Vertical Wall Digging Depth	3270 mm	10'9"	3550 mm	11'8"	3240 mm	10'8"

*Left side 1100 mm (3'7") offset position

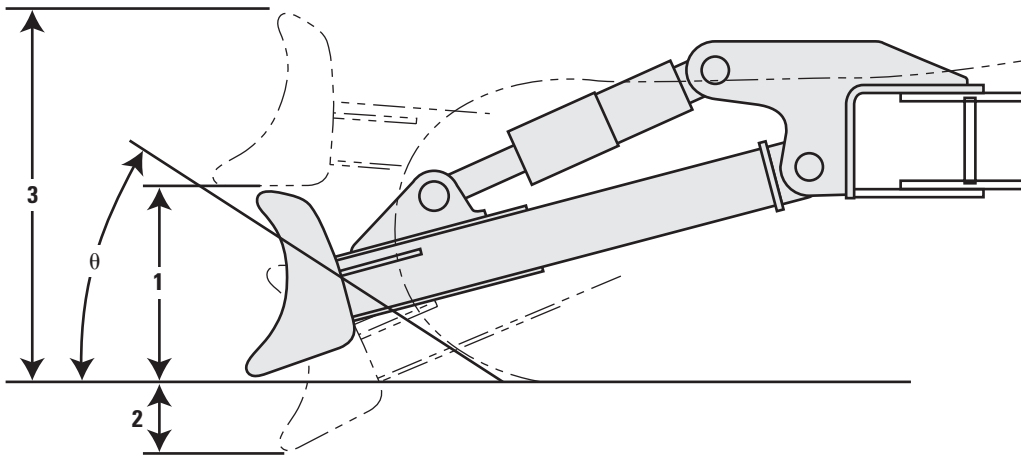
**Right side 1150 mm (3'9") offset position

All dimensions were calculated with 900 mm (35") wide GD bucket with 0.53 m³ (0.69 yd³) capacity and 1200 mm (3'11") tip radius.

314E CR Hydraulic Excavator Specifications

Blade Working Ranges

All dimensions are approximate.



Blade Options	2500 mm (8'2")		2600 mm (8'6")		2700 mm (8'10")	
Recommended Track Shoe Width	500 mm (20")		600 mm (24")		700 mm (28")	
1 Blade Height	630 mm	2'1"	630 mm	2'1"	630 mm	2'1"
2 Maximum Lowering Depth from Ground	570 mm	1'10"	570 mm	1'10"	570 mm	1'10"
3 Maximum Raising Height above Ground	1000 mm	3'3"	1000 mm	3'3"	1000 mm	3'3"
θ Approach Angle	24.9 degrees		24.9 degrees		24.9 degrees	

Major Component Weights

Base Machine (with boom cylinder, without counterweight, front linkage and track)	5040 kg	11,110 lb
Long Undercarriage	2660 kg	5,870 lb
Counterweight		
Standard – 3.06 mt (3.4 t)	3060 kg	6,750 lb
Heavy – 3.56 mt (3.9 t)	3560 kg	7,850 lb
Boom (includes lines, pins and stick cylinder)		
Reach Boom – 4.65 m (15'3")	1040 kg	2,290 lb
Power Offset Boom	1730 kg	3,810 lb
Reach Boom for CGC – 4.65 m (15'3")	1050 kg	2,320 lb
Stick (includes lines, pins, bucket cylinder and bucket linkage)		
R3.0 m (9'10")	650 kg	1,430 lb
R2.8 m (9'2")	620 kg	1,370 lb
R2.5 m (8'2")	570 kg	1,260 lb
2.13 m (6'11") for Power Offset Boom	570 kg	1,260 lb
R3.0 m (9'10") for CGC	650 kg	1,430 lb
R3.0 m (9'10") for Thumb	700 kg	1,540 lb
Track Shoe (Long/per two tracks)		
500 mm (20") Triple Grouser	1570 kg	3,460 lb
500 mm (20") Triple Grouser with Rubber Pad	2080 kg	4,590 lb
600 mm (24") Triple Grouser	1820 kg	4,010 lb
700 mm (28") Triple Grouser	2090 kg	4,610 lb
Blade		
2500 mm (8'2")	810 kg	1,790 lb
2600 mm (8'6")	810 kg	1,790 lb
2700 mm (8'10")	820 kg	1,810 lb

All weights are rounded up to nearest 10 kg and lb. Kg and lb were rounded up separately so some of the kg and lb do not match.

Base machine includes 75 kg (170 lb) operator weight, 90% fuel weight, and undercarriage with center guard.

314E CR Hydraulic Excavator Specifications

Operating Weight and Ground Pressure

	700 mm (28") Triple Grouser Shoes				600 mm (24") Triple Grouser Shoes				500 mm (20") Triple Grouser Shoes			
	kg	lb	kPa	psi	kg	lb	kPa	psi	kg	lb	kPa	psi
Long Undercarriage without Blade, with Standard Counterweight												
Reach Boom – 4.65 m (15'3")												
R3.0 m (9'10")	15 100	33,300	32.1	4.66	14 800	32,600	36.7	5.32	14 600	32,200	43.5	6.31
R2.8 m (9'2")	15 000	33,100	31.9	4.63	14 800	32,600	36.7	5.32	14 500	32,000	43.2	6.27
R2.5 m (8'2")	15 000	33,100	31.9	4.63	14 700	32,400	36.5	5.32	14 500	32,000	43.2	6.27
Long Undercarriage with Blade, with Standard Counterweight												
Reach Boom – 4.65 m (15'3")												
R3.0 m (9'10")	15 900	35,000	33.8	4.90	15 600	34,400	38.7	5.61	15 400	34,000	45.9	6.66
R2.8 m (9'2")	15 900	35,000	33.8	4.90	15 600	34,400	38.7	5.61	15 300	33,700	45.6	6.61
R2.5 m (8'2")	15 800	34,800	33.6	4.87	15 600	34,400	38.7	5.61	15 300	33,700	45.6	6.61
Power Offset Boom												
2.13 m (6'11")	16 500	36,400	35.1	5.09	16 200	35,700	40.2	5.83	15 900	35,000	47.4	6.87
Long Undercarriage without Blade, with Heavy Counterweight												
Reach Boom – 4.65 m (15'3")												
R3.0 m (9'10")	15 600	34,400	33.2	4.82	15 300	33,700	38.0	5.51	15 100	33,300	45.0	6.53
R2.8 m (9'2")	15 500	34,200	33.0	4.79	15 300	33,700	38.0	5.51	15 000	33,100	44.7	6.48
R2.5 m (8'2")	15 500	34,200	33.0	4.79	15 200	33,500	37.7	5.47	15 000	33,100	44.7	6.48
Long Undercarriage with Blade, with Heavy Counterweight												
Reach Boom – 4.65 m (15'3")												
R3.0 m (9'10")	16 400	36,200	34.9	5.06	16 100	35,500	40.0	5.80	15 900	35,100	47.4	6.87
R2.8 m (9'2")	16 400	36,200	34.9	5.06	16 100	35,500	40.0	5.80	15 800	34,800	47.1	6.83
R2.5 m (8'2")	16 300	35,900	34.7	5.03	16 100	35,500	40.0	5.80	15 800	34,800	47.1	6.83
Power Offset Boom												
2.13 m (6'11")	17 000	37,500	36.2	5.25	16 700	36,800	41.4	6.00	16 400	36,200	48.8	7.08

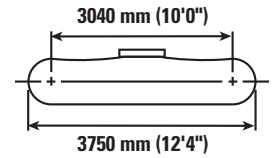
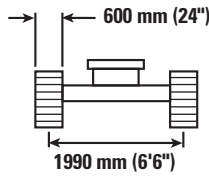
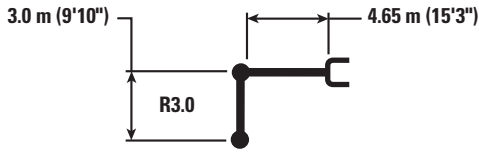
Bucket and Stick Forces

Stick	Reach Boom 4.65 m (15'3")				Power Offset Boom			
	R3.0 m (9'10")		R2.8 m (9'2")		R2.5 m (8'2")		2.13 m (6'11")	
General Duty								
Bucket Digging Force (SAE)	85 kN	19,200 lbf	85 kN	19,200 lbf	85 kN	19,200 lbf	78 kN	17,500 lbf
Stick Digging Force (SAE)	57 kN	12,800 lbf	60 kN	13,500 lbf	64 kN	14,300 lbf	61 kN	13,700 lbf
Severe Duty								
Bucket Digging Force (SAE)	84 kN	18,800 lbf	83 kN	18,700 lbf	83 kN	18,700 lbf	77 kN	17,200 lbf
Stick Digging Force (SAE)	57 kN	12,800 lbf	60 kN	13,400 lbf	63 kN	14,200 lbf	61 kN	13,700 lbf

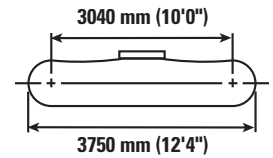
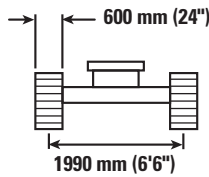
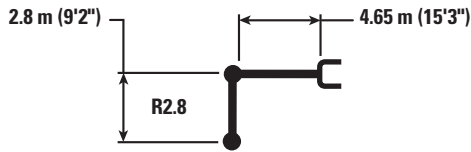
Caterpillar recommends using appropriate work tools to maximize the value customers receive from our products. Use of work tools, including buckets, which are outside of Caterpillar's recommendations or specifications for weight, dimensions, flows, pressures, etc. may result in less-than-optimal performance, including but not limited to reductions in production, stability, reliability, and component durability. Improper use of a work tool resulting in sweeping, prying, twisting and/or catching of heavy loads will reduce the life of the boom and stick.

314E CR Hydraulic Excavator Specifications

Reach Boom Lift Capacities – Standard Counterweight: 3.06 mt (3.4 t) – Blade Down



		1.5 m/5.0 ft		3.0 m/10.0 ft		4.5 m/15.0 ft		6.0 m/20.0 ft		7.5 m/25.0 ft		m ft		
7.5 m 25.0 ft	kg lb					*2600 *2600						*2500 *5,600	*2500 *5,600	4.54 14.33
6.0 m 20.0 ft	kg lb					*3450 *7,550		*2350 *2350				*2100 *4,650	*2100 *4,650	6.07 19.68
4.5 m 15.0 ft	kg lb					*3700 *8,050	*3700 *8,050	*3400 *7,400	2850 6,100			*2000 *4,350	*2000 *4,350	6.96 22.72
3.0 m 10.0 ft	kg lb			*5900 *12,700	*5900 *12,700	*4350 *9,450	4300 9,200	*3650 *7,900	2750 5,900			*2000 *4,350	1950 4,300	7.43 24.36
1.5 m 5.0 ft	kg lb			*8050 *17,350	7400 15,900	*5150 *11,150	4000 8,600	*3950 *8,550	2650 5,650			*2100 *4,550	1850 4,100	7.58 24.88
0.0 m 0.0 ft	kg lb			*7350 *16,950	6950 14,850	*5600 *12,100	3800 8,150	*4100 *8,850	2550 5,450			*2300 *5,050	1900 4,150	7.43 24.36
-1.5 m -5.0 ft	kg lb	*4550 *10,150	*4550 *10,150	*8050 *17,450	6800 14,600	*5400 *11,700	3700 7,900	*3900 *8,400	2500 5,350			*2700 *6,000	2050 4,500	6.94 22.73
-3.0 m -10.0 ft	kg lb	*7550 *16,950	*7550 *16,950	*6450 *13,950	*6450 *13,950	*4500 *9,650	3700 7,950	*2950 7,950	2500			*2850 *6,300	2500 5,500	6.04 19.71
-4.5 m -15.0 ft	kg lb			*3550 *7,350	*3550 *7,350							*2150 *4,500	*2150 *4,500	4.49 14.39



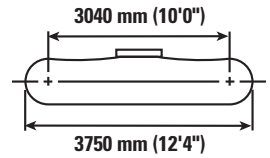
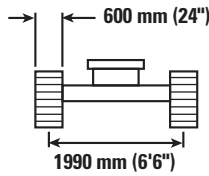
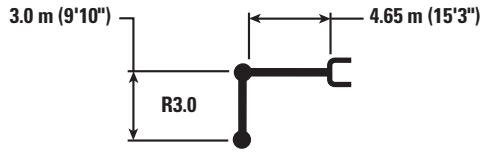
		1.5 m/5.0 ft		3.0 m/10.0 ft		4.5 m/15.0 ft		6.0 m/20.0 ft		7.5 m/25.0 ft		m ft		
7.5 m 25.0 ft	kg lb											*2750 *6,250	*2750 *6,250	4.21 13.20
6.0 m 20.0 ft	kg lb					*3650 *7,950	*3650 *7,950					*2300 *5,100	*2300 *5,100	5.83 18.88
4.5 m 15.0 ft	kg lb					*3850 *8,400	*3850 *8,400	*3500 *7,650	2850 6,100			*2150 *4,750	*2150 *4,750	6.75 22.03
3.0 m 10.0 ft	kg lb			*6300 *13,450	*6300 *13,450	*4550 *9,800	4250 9,150	*3750 *8,100	2750 5,900			*2150 *4,750	2050 4,500	7.24 23.72
1.5 m 5.0 ft	kg lb			*8300 *17,900	7350 15,750	*5300 *11,400	4000 8,600	*4000 *8,700	2650 5,700			*2250 *4,950	1950 4,250	7.39 24.26
0.0 m 0.0 ft	kg lb			*7050 *16,300	6950 14,900	*5650 *12,200	3800 8,150	*4150 *8,950	2550 5,500			*2500 *5,500	1950 4,300	7.23 23.73
-1.5 m -5.0 ft	kg lb	*4750 *10,600	*4750 *10,600	*7900 *17,100	6850 14,700	*5400 *11,650	3700 7,950	*3850 *8,300	2500 5,400			*3000 *6,600	2150 4,750	6.73 22.05
-3.0 m -10.0 ft	kg lb	*8100 *18,150	*8100 *18,150	*6200 *13,300	*6200 *13,300	*4350 *9,300	3750 8,000					*2900 *6,350	2650 5,900	5.80 18.91
-4.5 m -15.0 ft	kg lb											*2550 *2550	*2550 *2550	3.66



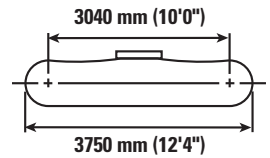
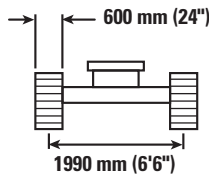
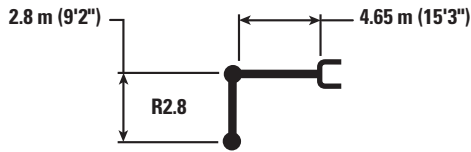
ISO 10567



Reach Boom Lift Capacities – Heavy Counterweight: 3.56 mt (3.9 t) – Blade Down



		1.5 m/5.0 ft		3.0 m/10.0 ft		4.5 m/15.0 ft		6.0 m/20.0 ft		7.5 m/25.0 ft		m ft		
7.5 m 25.0 ft	kg lb					*2600 *2600						*2500 *5,600	*2500 *5,600	4.54 14.33
6.0 m 20.0 ft	kg lb					*3450 *7,550	*3450 *7,550	*2350 *2350				*2100 *4,650	*2100 *4,650	6.07 19.68
4.5 m 15.0 ft	kg lb					*3700 *8,050	*3700 *8,050	*3400 *7,400	3050 6,500			*2000 *4,350	*2000 *4,350	6.96 22.72
3.0 m 10.0 ft	kg lb			*5900 *12,700	*5900 *12,700	*4350 *9,450	*4350 *9,450	*3650 *7,900	2950 6,350			*2000 *4,350	*2000 *4,350	7.43 24.36
1.5 m 5.0 ft	kg lb			*8050 *17,350	7900 16,950	*5150 *11,150	4300 9,200	*3950 *8,550	2850 6,100			*2100 *4,550	2000 4,400	7.58 24.88
0.0 m 0.0 ft	kg lb			*7350 *16,950	*7350 15,950	*5600 *12,100	4050 8,750	*4100 *8,850	2750 5,850			*2300 *5,050	2050 4,450	7.43 24.36
-1.5 m -5.0 ft	kg lb	*4550 *10,150	*4550 *10,150	*8050 *17,450	7300 15,700	*5400 *11,700	3950 8,500	*3900 *8,400	2650 5,750			*2700 *6,000	2200 4,850	6.94 22.73
-3.0 m -10.0 ft	kg lb	*7550 *16,950	*7550 *16,950	*6450 *13,950	*6450 *13,950	*4500 *9,650	3950 8,550	*2950 8,550	2700			*2850 *6,300	2700 5,950	6.04 19.71
-4.5 m -15.0 ft	kg lb			*3550 *7,350	*3550 *7,350							*2150 *4,500	*2150 *4,500	4.49 14.39



		1.5 m/5.0 ft		3.0 m/10.0 ft		4.5 m/15.0 ft		6.0 m/20.0 ft		7.5 m/25.0 ft		m ft		
7.5 m 25.0 ft	kg lb											*2750 *6,250	*2750 *6,250	4.21 13.20
6.0 m 20.0 ft	kg lb					*3650 *7,950	*3650 *7,950					*2300 *5,100	*2300 *5,100	5.83 18.88
4.5 m 15.0 ft	kg lb					*3850 *8,400	*3850 *8,400	*3500 *7,650	3050 6,500			*2150 *4,750	*2150 *4,750	6.75 22.03
3.0 m 10.0 ft	kg lb			*6300 *13,450	*6300 *13,450	*4550 *9,800	*4550 *9,750	*3750 *8,100	2950 6,350			*2150 *4,750	*2150 *4,750	7.24 23.72
1.5 m 5.0 ft	kg lb			*8300 *17,900	7850 16,850	*5300 *11,400	4250 9,200	*4000 *8,700	2850 6,100			*2250 *4,950	2100 4,600	7.39 24.26
0.0 m 0.0 ft	kg lb			*7050 *16,300	*7050 15,950	*5650 *12,200	4050 8,750	*4150 *8,950	2750 5,900			*2500 *5,500	2150 4,650	7.23 23.73
-1.5 m -5.0 ft	kg lb	*4750 *10,600	*4750 *10,600	*7900 *17,100	7350 15,800	*5400 *11,650	4000 8,550	*3850 *8,300	2700 5,800			*3000 *6,600	2350 5,100	6.73 22.05
-3.0 m -10.0 ft	kg lb	*8100 *18,150	*8100 *18,150	*6200 *13,300	*6200 *13,300	*4350 *9,300	4000 8,600					*2900 *6,350	2850 6,350	5.80 18.91
-4.5 m -15.0 ft	kg lb											*2550 *2550	*2550 *2550	3.66

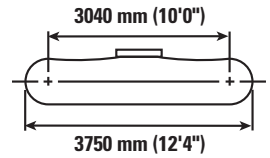
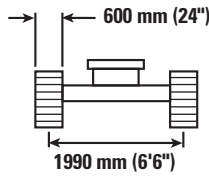
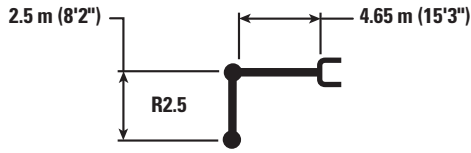


ISO 10567

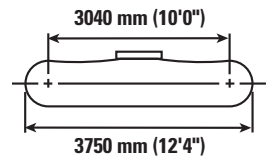
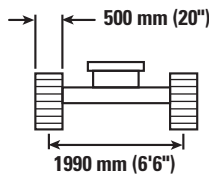
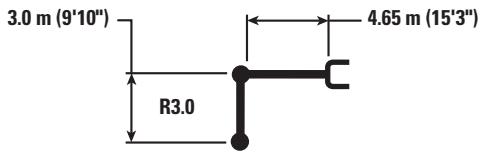


314E CR Hydraulic Excavator Specifications

Reach Boom Lift Capacities – Heavy Counterweight: 3.56 mt (3.9 t) – Blade Down



		1.5 m/5.0 ft		3.0 m/10.0 ft		4.5 m/15.0 ft		6.0 m/20.0 ft		7.5 m/25.0 ft		m ft		
7.5 m 25.0 ft	kg lb			*4450 *9,250	*4450 *9,250							*3050 *6,900	*3050 *6,900	3.74 11.57
6.0 m 20.0 ft	kg lb					*3900 *8,550	*3900 *8,550					*2400 *5,350	*2400 *5,350	5.51 17.79
4.5 m 15.0 ft	kg lb			*4550 *9,950	*4550 *9,950	*4100 *8,900	*4100 *8,900	*3700 *7,750	3000 6,450			*2250 *4,950	*2250 *4,950	6.47 21.11
3.0 m 10.0 ft	kg lb			*6800 *14,550	*6800 *14,550	*4750 *10,250	4500 9,700	*3850 *8,400	2950 6,300			*2250 *4,900	*2250 *4,900	6.98 22.87
1.5 m 5.0 ft	kg lb			*7250 *17,650	*7250 *16,650	*5450 *11,750	4250 9,150	*4100 *8,900	2850 6,100			*2350 *5,150	2200 4,850	7.14 23.43
0.0 m 0.0 ft	kg lb			*6550 *15,100	*6550 *15,100	*5700 *12,300	4100 8,750	*4150 *8,950	2750 5,900			*2600 *5,700	2250 4,950	6.97 22.88
-1.5 m -5.0 ft	kg lb	*4950 *11,100	*4950 *11,100	*7600 *16,500	7400 15,900	*5300 *11,400	4000 8,650	*3750 *8,000	2750 5,850			*3150 *6,900	2500 5,450	6.45 21.13
-3.0 m -10.0 ft	kg lb	*7600 *16,350	*7600 *16,350	*5700 *12,250	*5700 *12,250	*4050 *8,600	*4050 *8,600					*2900 *6,300	*2900 *6,300	5.47 17.83



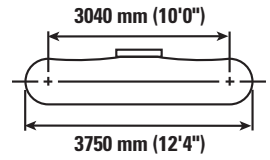
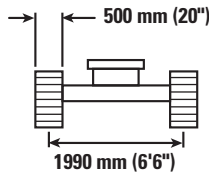
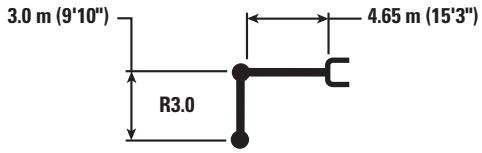
		1.5 m/5.0 ft		3.0 m/10.0 ft		4.5 m/15.0 ft		6.0 m/20.0 ft		7.5 m/25.0 ft		m ft		
7.5 m 25.0 ft	kg lb					*2600 *2600	*2600 *2600					*2500 *5,600	*2500 *5,600	4.54 14.33
6.0 m 20.0 ft	kg lb					*3450 *7,550	*3450 *7,550	*2350 *2350	*2350 *2350			*2100 *4,650	*2100 *4,650	6.07 19.68
4.5 m 15.0 ft	kg lb					*3700 *8,050	*3700 *8,050	*3400 *7,400	2950 6,300			*2000 *4,350	*2000 *4,350	6.96 22.72
3.0 m 10.0 ft	kg lb			*5900 *12,700	*5900 *12,700	*4350 *9,450	*4350 *9,450	*3650 *7,900	2850 6,100			*2000 *4,350	*2000 *4,350	7.43 24.36
1.5 m 5.0 ft	kg lb			*8050 *17,350	7550 16,250	*5150 *11,150	4100 8,850	*3950 *8,550	2750 5,850	*2500 1950		*2100 *4,550	1950 4,250	7.58 24.88
0.0 m 0.0 ft	kg lb			*7350 *16,950	7100 15,250	*5600 *12,100	3900 8,400	*4100 *8,850	2600 5,650			*2300 *5,050	1950 4,300	7.43 24.36
-1.5 m -5.0 ft	kg lb	*4550 *10,150	*4550 *10,150	*8050 *17,450	7000 15,000	*5400 *11,700	3800 8,150	*3900 *8,400	2550 5,500			*2700 *6,000	2100 4,650	6.94 22.73
-3.0 m -10.0 ft	kg lb	*7550 *16,950	*7550 *16,950	*6450 *13,950	*6450 *13,950	*4500 *9,650	3800 8,200	*2950 *2950	2600 2600			*2850 *6,300	2550 5,700	6.04 19.71
-4.5 m -15.0 ft	kg lb			*3550 *7,350	*3550 *7,350							*2150 *4,500	*2150 *4,500	4.49 14.39



ISO 10567



Reach Boom Lift Capacities – Heavy Counterweight: 3.56 mt (3.9 t) – Blade Down with Rubber Pad



		1.5 m/5.0 ft		3.0 m/10.0 ft		4.5 m/15.0 ft		6.0 m/20.0 ft		7.5 m/25.0 ft				
														m
7.5 m	kg					*2600	*2600					*2500	*2500	4.54
25.0 ft	lb											*5,600	*5,600	14.33
6.0 m	kg					*3450	*3450	*2350	*2350			*2100	*2100	6.07
20.0 ft	lb					*7,550	*7,550					*4,650	*4,650	19.68
4.5 m	kg					*3700	*3700	*3400	3000			*2000	*2000	6.96
15.0 ft	lb					*8,050	*8,050	*7,400	6,500			*4,350	*4,350	22.72
3.0 m	kg			*5900	*5900	*4350	*4350	*3650	2950			*2000	*2000	7.43
10.0 ft	lb			*12,700	*12,700	*9,450	*9,450	*7,900	6,300			*4,350	*4,350	24.36
1.5 m	kg			*8050	7800	*5150	4250	*3950	2800	*2500	2050	*2100	2000	7.58
5.0 ft	lb			*17,350	16,750	*11,150	9,150	*8,550	6,050			*4,550	4,400	24.88
0.0 m	kg			*7350	*7350	*5600	4050	*4100	2700			*2300	2000	7.43
0.0 ft	lb			*16,950	15,750	*12,100	8,650	*8,850	5,800			*5,050	4,450	24.36
-1.5 m	kg	*4550	*4550	*8050	7250	*5400	3950	*3900	2650			*2700	2200	6.94
-5.0 ft	lb	*10,150	*10,150	*17,450	15,500	*11,700	8,450	*8,400	5,700			*6,000	4,850	22.73
-3.0 m	kg	*7550	*7550	*6450	*6450	*4500	3950	*2950	2700			*2850	2650	6.04
-10.0 ft	lb	*16,950	*16,950	*13,950	*13,950	*9,650	8,450					*6,300	5,900	19.71
-4.5 m	kg			*3550	*3550							*2150	*2150	4.49
-15.0 ft	lb			*7,350	*7,350							*4,500	*4,500	14.39



ISO 10567



314E CR Hydraulic Excavator Specifications

Work Tool Offering Guide*

Boom Type	Reach Boom		
Stick Size	R3.0 m (9'10")	R2.8 m (9'2")	R2.5 m (8'2")
Hydraulic Hammer	H110Es H115Es	H110Es H115Es	H110Es H115Es
Mobile Scrap and Demolition Shear	S320B**	S320B**	S320B**
Compactor (Vibratory Plate)	CVP75	CVP75	CVP75
Contractors' Grapple	G112B	G112B	G112B
Trash Grapple			
Thumbs			
Rakes			
Center-Lock Pin Grabber Coupler			

These work tools are available for the 314E CR.
Consult your Cat dealer for proper match.

*Matches are dependent on excavator configurations. Consult your Cat dealer for proper work tool match.

**Boom Mount.

Bucket Specifications and Compatibility

	Width		Capacity		Weight		Fill	Reach Booms				POB**
	mm	in	m ³	yd ³	kg	lb		%	R3.0 m (9'10")	R2.8 m (9'2")	R2.5 m (8'2")	
Without Quick Coupler												
General Duty (GD)	450	18	0.20	0.27	276	608	100	●	●	●	●	●
	600	24	0.31	0.40	326	719	100	●	●	●	●	●
	750	30	0.41	0.54	374	823	100	●	●	●	●	●
	900	36	0.53	0.69	423	932	100	●	●	●	●	●
	1050	42	0.65	0.84	469	1,034	100	⊙	⊙	●	⊖	x
	1200	48	0.76	1.00	510	1,125	100	x	x	x	x	x
Severe Duty (SD)	600	24	0.31	0.40	367	810	90	●	●	●	●	●
	750	30	0.41	0.54	425	936	90	●	●	●	●	●
	900	36	0.53	0.69	483	1,065	90	●	●	●	●	●
	1050	42	0.65	0.84	529	1,166	90	⊙	●	●	⊖	x
Maximum load pin-on (payload + bucket)							kg	1605	1690	1815	1555	2275
							lb	3,537	3,725	4,000	3,427	5,014

	Width		Capacity		Weight		Fill	Reach Booms				POB**
	mm	in	m ³	yd ³	kg	lb		%	R3.0 m (9'10")	R2.8 m (9'2")	R2.5 m (8'2")	
With Center-Lock Quick Coupler												
General Duty (GD)	450	18	0.20	0.27	276	608	100	●	●	●	●	●
	600	24	0.31	0.40	326	719	100	●	●	●	●	●
	750	30	0.41	0.54	374	823	100	●	●	●	●	●
	900	36	0.53	0.69	423	932	100	⊙	⊙	●	⊖	●
	1050	42	0.65	0.84	469	1,034	100	○	⊖	⊖	○	●
	1200	48	0.76	1.00	510	1,125	100	◇	○	○	◇	⊙
Severe Duty (SD)	600	24	0.31	0.40	367	810	90	●	●	●	●	●
	750	30	0.41	0.54	425	936	90	●	●	●	●	●
	900	36	0.53	0.69	483	1,065	90	⊙	●	●	○	●
	1050	42	0.65	0.84	529	1,166	90	⊖	⊖	⊙	○	●
Maximum load with coupler (payload + bucket)							kg	1359	1444	1569	1309	2029
							lb	2,996	3,183	3,459	2,885	4,472

The above loads are in compliance with hydraulic excavator standard EN474, they do not exceed 87% of hydraulic lifting capacity or 75% of tipping capacity with front linkage fully extended at ground line with bucket curled.

Capacity based on ISO 7451.

Bucket weight with Long tips.

*Densities with 3.0 m (9'10") thumb stick do not consider thumb weight.

**POB installs blade as standard configuration.

Maximum Material Density:

- 2100 kg/m³ (3,500 lb/yd³)
- ⊙ 1800 kg/m³ (3,000 lb/yd³)
- ⊖ 1500 kg/m³ (2,500 lb/yd³)
- 1200 kg/m³ (2,000 lb/yd³)
- ◇ 900 kg/m³ (1,500 lb/yd³)
- x Not recommended

Caterpillar recommends using appropriate work tools to maximize the value customers receive from our products. Use of work tools, including buckets, which are outside of Caterpillar's recommendations or specifications for weight, dimensions, flows, pressures, etc. may result in less-than-optimal performance, including but not limited to reductions in production, stability, reliability, and component durability. Improper use of a work tool resulting in sweeping, prying, twisting and/or catching of heavy loads will reduce the life of the boom and stick.

Standard Equipment

Standard equipment may vary. Consult your Cat dealer for details.

CAB

- Pressurized operator station with positive filtration
- Sliding upper door window (left-hand cab door)
- Removable lower windshield with in cab storage bracket
- Coat hook
- Beverage holder
- Literature holder
- AM/FM radio
- Radio with MP3 auxiliary audio port
- Two stereo speakers
- Storage shelf suitable for lunch or toolbox
- Color LCD display with indicators, filter/fluid change, and working hour information
- Adjustable armrest
- Height adjustable joystick consoles
- Neutral lever (lock out) for all controls
- Travel control pedals with removable hand levers
- Capability of installing additional pedal
- Power outlets, 5 amp
- Travel alarm
- Laminated glass front upper window and tempered other windows

ELECTRICAL

- 80 amp alternator
- Circuit breaker
- Capability to electrically connect a beacon

ENGINE

- C4.4 diesel engine
- Biodiesel capable
- Meets EPA Tier 4 Interim emission standards
- 2300 m (7,500 ft) altitude capability
- Electric priming pump
- Automatic engine speed control
- Economy and high power modes
- Two-speed travel
- Side-by-side cooling system
- Radial seal air filter
- Primary filter with water separator and water separator indicator
- Secondary filter
- Screen filter in fuel line
- Variable speed fan with viscous clutch

HYDRAULIC SYSTEM

- Regeneration circuit for boom and stick
- Reverse swing dampening valve
- Automatic swing parking brake
- High-performance hydraulic return filter
- Fine swing control

LIGHTS

- Halogen boom light (left side)
- Time delay function for boom light and cab light
- Exterior light

UNDERCARRIAGE

- Center track guiding guard
- Grease Lubricated Track GLT2, resin seal
- Towing eye on base frame

SECURITY

- Cat one key security system
- Door locks
- Cap locks on fuel and hydraulic tanks
- Lockable external tool/storage box
- Signaling/warning horn
- Secondary engine shutoff switch
- Rear window for emergency exit
- Guard, travel motor protection
- Guard rail
- Rearview camera-ready

Optional Equipment

Optional equipment may vary. Consult your Cat dealer for details.

CAB

- Seat, high-back air suspension with heater and cooling
- Seat, high-back air suspension with heater
- Seat, high-back mechanical suspension
- Right pedal
- Rain protector
- Cab mirror
- Ashtray

COUNTERWEIGHT

- 3.06 mt (3.4 t) without lifting eye
- 3.56 mt (3.9 t) without lifting eye

ELECTRICAL

- Cold weather battery -25° C (-13° F)
- Jump start receptacle

ENGINE

- Quick drains, engine and hydraulic oil

FRONT LINKAGE

- Quick coupler
- Bucket linkage
- 4.65 m (15'3") Reach Boom
- Power Offset Boom
- 2.13 m (6'11") stick for Power Offset Boom
- 2.5 m (8'2") stick
- 2.8 m (9'2") stick
- 3.0 m (9'10") stick
- 3.0 m (9'10") thumb-ready stick

HYDRAULIC SYSTEM

- Control pattern quick-changer, two way
- Auxiliary hydraulics
- Boom and stick lines
- High-pressure line
- Medium-pressure line
- Quick coupler line
- Boom lowering and stick lowering control device
- Cat Bio hydraulic oil

LIGHTS

- Working light, cab mounted with time delay
- HID light, cab mounted with time delay
- Halogen boom lights (right side)

UNDERCARRIAGE

- 500 mm (20") triple grouser shoes
- 600 mm (24") triple grouser shoes
- 700 mm (28") triple grouser shoes
- Rubber pad for 500 mm (20") triple grouser shoes
- 2500 mm (8'2") blade with replaceable cutting edge
- 2600 mm (8'6") blade with replaceable cutting edge
- 2700 mm (8'10") blade with replaceable cutting edge
- Swivel guard

SECURITY

- FOGS, bolt-on
- Guard, cab front, mesh
- Guard, vandalism
- Security system fitted (MSS)
- Bottom guards, heavy duty
- Rearview camera

TECHNOLOGY

- Cat Grade Control Depth and Slope
- Product Link

314E CR Hydraulic Excavator

For more complete information on Cat products, dealer services, and industry solutions, visit us on the web at www.cat.com

© 2012 Caterpillar Inc.
All rights reserved

Materials and specifications are subject to change without notice. Featured machines in photos may include additional equipment. See your Cat dealer for available options.

CAT, CATERPILLAR, SAFETY.CAT.COM, their respective logos, "Caterpillar Yellow" and the "Power Edge" trade dress, as well as corporate and product identity used herein, are trademarks of Caterpillar and may not be used without permission.

AEHQ6905 (11-2012)
(North America)

