

Operation manual / Spare parts list

Scan Combiflex Handyman 125

Operation manual

Scan Combiflex Handyman **125**



Operation manual / Spare parts list

Scan Combiflex Handyman 125

Index

1	Preliminary notes	3
1.1	General notes for the operator	4
1.2	Guarantee	5
2	Safety notes	6
2.1	General information	6
2.2	Designated use	6
2.3	Prerequisites for the user	6
2.4	Danger by improper use of the machine	7
2.5	Warning, danger by electric surge	7
2.6	Security and machine protection facilities	7
2.7	Safety notes: Operation	7
2.8	Safety notes: Dust	8
2.9	Safety notes: Noise	8
2.10	Emission: Vibration	8
3	General instructions for the user	9
3.1	Scope of delivery	9
3.2	Optional accessories	9
3.3	Disposal	10
3.4	Dimensions/Weight/Technical details	10
3.5	Performance specifications	10
4	Operation	11
4.1	Diamond discs attach / change	11
4.2	Starting the machine	12
4.3	Vacuum system	13
4.4	Adjusting possibilities at the vacuum housing	13
4.5	Work till the edge area	13
4.6	Grinding along the wall	14
5	Maintenance and repair	14
5.1	General information	14
5.2	Inspection in accordance with VBG 4§5 (1) Nr. 2	14
5.3	Safety information for maintenance works	15
	Drawing Motor	16
	Drawing Vacuum system	17
	Spare parts list Vacuum system	18
	Drawing U-Handle	19
	Spare parts list – U-Handle	19
CE	Declaration of conformity	20

Operation manual / Spare parts list

Scan Combiflex Handyman 125

1 Preliminary notes

Dear customer,

you have decided for the SC Handyman 125, the correct choice for quality and performance.

Your SC Handyman 125 is the result of the logical conversion of long-standing experience.

This machine unites extremely high grinding performance, excellent vacuum system with mature and reliable technology simply to be used.

This operation manual contains important notes for the operation of your machine.

Note



Please read the operation manual carefully, in particular the safety notes and ensure that all operators read this operation manual prior to operate the machine.

Adherence to the safety notes not only helps to protect against potential dangers for health and personal safety but also prevents an improper utilization of the machine.

Pay attention and adhere to all warning labels on the machine. Replace any missing or damaged labels immediately.

It is too late if you do it while working!

Never allow anybody without sufficient skills and knowledge to operate the machine.

This will allow you to operate the machine without running any danger and encountering any troubles. It will help you to avoid any unnecessary delays caused by repairs, and will pave the ground for an optimum utilization and operation of this equipment.

No liability for the damages which originate from the use of these operating instructions.
Changes reserve.

Scanmaskin Sweden AB
Box 187
437 22 Lindome / Sweden
Tel: +46 (0)31-994970

www.scanmaskin.com

State: October 2011

Operation manual / Spare parts list

Scan Combiflex Handyman 125

The operation manual identify important notes on safety and damage prevention using the following symbols:



Warning!

Designates a potentially hazardous situation.
Please note that failure could cause death or injuries.



Attention!

Designates a dangerous situation.
Please note that failure could cause damages at products or others.



Note!

Important notes on the operation, intended for an optimum utilization of the equipment and other useful information.

*The operation manual is intended to **accompany the machine**.*

The operation manual has been prepared by the manufacturer on the basis of his knowledge and experience with respect to design, production and operation.

Specific instructions of the user may be added to these operation manual (for example to refer to surveillance and reporting regulations, inter-company maintenance and inspection schedules. The inspection intervals are in accordance with VBG 4 §§ 3 and 5 und § 20 GefStoffV (Regulations of hazardous materials)).

1.1 **General notes for the operator**

As a operator you are responsible for:

- The proper and normal operation by trained persons only,
- The adherence to the safety regulations, the safety notes, and the provisions referring to working safety and accident prevention,
- The technical instruction of the operation personnel on the equipment and their reading of the operation instructions of the equipment.

Operation manual / Spare parts list

Scan Combiflex Handyman 125

1.2 Guarantee and liability

Scanmaskin Sweden AB ensures a guarantee and liability are in accordance with our currently valid general business and sales conditions. The guarantee runs out after 12 months from purchase date.

We reject any guarantee claims for tools which are not in their original condition, or for altered or changed tools or which are not used in accordance to the intended use.

We guarantee free maintenance of this machine when getting carriage paid, in case of damages due to manufacturing defects or material defects; provided that the machine is correct used and not changed or altered. Wearing parts are not under warranty

The guarantee claim expires:

- In case of damages caused by improper operation and utilization other than intended use.
- In case of incorrect assembly, intervention of unauthorized persons or utilizations of accessories or replacement parts that are not Scanmaskin Sweden AB original parts (with exception of commercially available sanding discs).

We strongly recommend the use of genuine spare parts and accessories from Scanmaskin Sweden AB even after expiration of the warranty period. This is the only way to ensure an impeccable operation of your machine.

Note!

Check the shipment in order to ensure that it is complete in accordance with the chapter „scope of delivery“, and inform your dealer immediately, should any shipment be incorrect.

Operation manual / Spare parts list

Scan Combiflex Handyman 125

2 Safety notes

2.1 General information

Adherence to the safety notes helps to protect against injuries and reduces the risk of an improper utilization of the machine. Every user of this machine and personnel charged with the assembly, maintenance or repair of this machine must have read and understood the contents of the instructions prior to starting any work.

2.2 Designated use

The SC Handyman 125 may be used exclusively to grind of materials like concrete, screed and filler, smoothness of unevennesses and remove from thin paste leftovers, color leftovers and coatings.

By no means may the machine be used for the treatment of other materials and surfaces.

Using the machine outdoors is not allowed.

If the machine is used for purposes other than those intended, the manufacturer of the machine can not be held liable for any damage to persons, property or pets resulting from such misuse.



Warning, Danger of electrical shocks

Machine may not be used with rain or moisture.

2.3 Prerequisites for the user

The users of the machine are required to

- be instructed with the operation of the machine,
- be familiar with and able to execute the operations required for the handling and assembly of the machine,
- be aware of and know the applicable safety regulations for the operation of such machines and adhere to these (cf. The chapter "Preliminary notes"),
- be informed about possible additional local (national) regulations (e.g. with respect to safety facilities),
- be informed about potential threats and dangers arising from the operation of such machines.

2.4 Danger by improper use of the machine

Operation manual / Spare parts list

Scan Combiflex Handyman 125



Warning, injury danger when starting the machine!

When starting the machine there originates an acceleration (the perceptible jerk) which can bring the machine out of control.

Hold the machine with both hands.



Warning, break danger!

Do not throw the machine and do not transport it unfastened on loading area.

SC Handyman 125 is build and conceived under observance and attention of the basic security standards and health standards.

The small and compact implementation of the machine can entice to use them to others than the intended use.

It can originate dangers which are not foreseeable before.

Injury danger exists, if the machine is removed by the ground. Things can be damaged or be destroyed.

2.5 **Warning, Danger of electrical shocks**



Do not use damaged lines and plugs.

The machine may be operated only in a technically flawless condition and with all safety facilities fully operational.

- In some building sites, above all in buildings their stream supply network and the security are unknown; a protective plug is to be used.

2.6 **Security and machine protection facilities**

The machine is equipped with an electric approach stream limitation.
The machine is equipped with a restart lock.

2.7 **Safety notes: Operation**

Perform a safety check prior to each start of the machine:

- Inspect the connecting cables and connectors/pugs for damage and improper connected load.
- Route the electrical cables properly to prevent persons tripping over them.
- Do not switch on the machine until it is in working position.
- Hold the machine firmly with both hands at the handle.
- Switch of the machine immediately when the operation is completed.

Operation manual / Spare parts list

Scan Combiflex Handyman 125

2.8 Safety notes: Dust

Warning! Finest concrete dust



Fine and finest dust is formed during grinding. The dust could result in health problems when inhaled. Therefore always carry a dust protection mask during grinding.

If the SC handyman machine is subject to normal operation, dust will naturally be generated.

The dust is sucked off by the vacuum system. Despite of this, it is impossible to prevent fine and finest concrete dust from being generated during the operation of the machine.

2.9 Safety notes: Noise

The measured noise value is: 89 dB(A)

The noise that is created during the operation of the machine depends on many factors. All the possible application types and the local regulations, such as the size of the rooms and the features of the ground affect the development of the noise.

Attention!



Wear an ear protection.

The noise value is above 80 dB.

The ear protection must be carried during the operation of the machine.

2.10 Emission: Vibration

The effective acceleration value is: 5,2 m/s²

Operation manual / Spare parts list

Scan Combiflex Handyman 125

3 General instructions for the user

3.1 Scope of delivery



1. SC Handyman 125
(Article. 510060)
2. Diamond disc 125 mm, two-rowed
(Article 510038)
3. Metal case
(Article 510095)
4. Wrench
5. Operation manual / Spare parts list

Note!



Control the completeness of the delivery according to chapter "Scope of delivery" and complain a faulty delivery immediately to your trader.

The SC Handyman 125 is delivered ready for use.
The two-rowed diamond disc 125 mm contained in the scope of supply is mounted.



Note!

Should it be necessary to mount an optional disc, obey the instructions in the paragraph 4.1 „Diamond discs attach / change“.

3.2 Optional accessories



510044 PCD Tiger 125 mm



510045 Scratch 125 mm

Operation manual / Spare parts list

Scan Combiflex Handyman 125



510038 TURBO 125

Elastic metal 125

Poler pads 125

3.3 Disposal

The disposal of the packaging and the electric accessories is carried out according to the regulations for the handling with rubbish.

The cardboard is usable again and can be used as a camp container. We recommend keeping the cardboard for possible back delivery for continuous examination according to. VBG 4 §5 (1) No. 2 or repair.

3.4 Dimensions / Weight / Technical details

Dimensions: 40 x 17 x 16 cm

Total weight: 4,9 kg (*without metal case*)
8,9 kg (*with metal case*)

Operation manual / Spare parts list

Scan Combiflex Handyman 125

3.5 Performance specifications

Version	SC Handyman 125
Type of current	Single phase, alternating current
Voltage	230 V / 50-60 Hz
Power motor	1530 Watt
Speed	3400 - 8000 rpm
Diamond disc Ø	125 mm
Shaft	M 14
Connecting piece for vacuum cleaner	Ø 34 mm

4 Operation

4.1 Diamond discs attach / change



Attention, Danger of cutting!



**Sharp borders at the diamond disc.
Attach the diamond disc carefully.
Wear protective gloves when mounting or changing the diamond discs.**

Operation manual / Spare parts list

Scan Combiflex Handyman 125

Operation steps:



1. Switch off the machine and separate the connection cable from the mains.
2. Turn the machine so that the bottom becomes visible.
3. Fix the spindle with the locking button against turn.
4. Open the flange nut with the provided key (right-hand thread).
5. *If necessary remove the worn out diamond disc.*
6. Put on new diamond disc.
7. Tighten again the flange nut.

4.2 Starting the machine



Attention, Danger of injury!

**The motor starts immediately when turned on.
Hold the machine firmly with both hands.**

Speed regulation

Preselect speed with adjusting wheel:

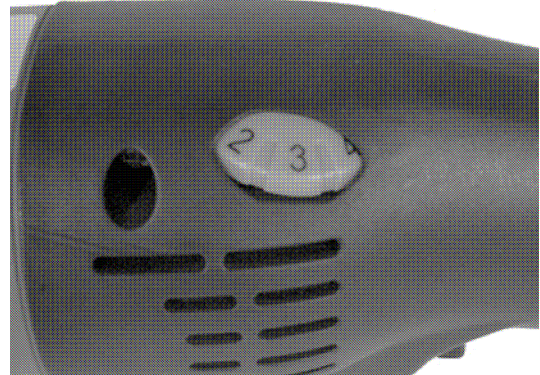
Adjusting wheel increment	Speed min⁻¹ / rpm
1	3400
2	4300
3	5200
4	6200
5	7100
6	8000

Operation manual / Spare parts list

Scan Combiflex Handyman 125



During operation never increase the speed of the machine to above that of the maximum admissible speed of the grinding tool!



Switch-on

1. Plug in mains connector.
2. Hold the machine firmly with both hands.
3. To turn the machine on, push the ON/OFF switch toward the front until it clicks in.

Fix the switch

4. Push the blocking to the front.
The switch is fixed.

Switch-off

1. Press the ON/OFF switch to trigger the blocking and the machine shuts down.



Attention, danger of overload by improper use!

The machine may be used only flat. The diamond disc must lie flat on the ground.

No excessive pressure may be exerted on the machine.

Do not lie with full body weight on the machine.



For protection against overheating, when a critical temperature is reached the electronic safety feature switches into the cool down mode. After a cool-down time of approx. 10 - 20 sec. the machine is again ready for operation. Turn the machine off and back on again to activate the electronic constant speed control.

Operation manual / Spare parts list

Scan Combiflex Handyman 125

4.3 Vacuum system

The SC Handyman125 is equipped in series with an Vacuum system.
Connecting piece Ø 34mm suitable for customary vacuum cleaner tube Ø 33mm.

Push the tube by light tricks on the connecting piece.

The brush around the diamond disc guarantees that the grinding dust remains to a great extent within the vacuum housing and can be sucked off immediately. During plain work the grinding dust is sucked off to almost 100%.



Caution, Material damages are possible!

To prevent material damage by the dust, always work with vacuum system and suitable industrial vacuum cleaner.

4.4 Adjusting possibilities at the vacuum housing

The vacuum housing can be adapted by the axial adjusting possibility to the ground. This is necessary because:

1. the brush wears out by the constant contact to the ground,
2. the diamond disc wears out by abrasion and
3. differently high diamond discs can be used

Operation steps:



1. Switch off the machine and separate the connection cable from the mains.
2. Release the allen screw and press the housing to the ground.
3. Fasten the allen screw again.



Adjusting ring at the vacuum housing

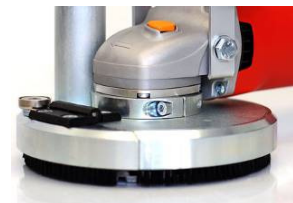
4.5 Work till the edge area

With the new developed SC Handyman 125 it is possible to work till the edge area. Moreover the front bonnet segment can be removed.

Operation steps:



1. Switch off the machine and separate the connection cable from the mains.
2. Tilt the bonnet segment backwards.
3. The bonnet segment is fixed with the integrated magnet at the housing.



Bonnet segment closed



Bonnet segment opened

Operation manual / Spare parts list

Scan Combiflex Handyman 125

4.6 Grinding along the wall

The exhaust hood can be turned at 90 degrees to grind even more comfortable along the wall.

Operation steps:



1. Switch off the machine and separate the connection cable from the mains.
2. Release the allen screw and turn the exhaust hood by 90 degrees.
3. Fasten the allen screw again.



5 Maintenance and repair

5.1 General information

The device needs no special care, but after a certain time one must control the parts which are subjected to a wear. Moreover we count the control and exchanging the brushes and also the smearing in the gearbox. These works must be carried out by a service.

- Pay attention to the cleanness of the device and the connection cable. Clean the aerial grooves. The case should be cleaned with a gentle cloth.



- **The use of the budgetary cleaners which contain petrol, trichloroethylene, ammonia and chloride is not permitted. These materials decompose and damage the plastic parts of the device.**

- Excessively strong sparkle is a sign which is dirt in the device or points to a wear of the brushes.

- **It is necessary to clean the ventilating fan openings regularly. Use for this a brush, or blow out it with air pressure.**



- **In the case of electric or mechanical damage bring the device for repair to your trader.**

5.2 Inspection in accordance with VBG 4 § 5 (1) Nr. 2

The user is responsible for ensuring that the machine is inspected with respect to its proper operation in intervals of 6 months. The inspection may only be executed by a skilled electrician or by personnel that has been trained in electrical skills, provided that suitable measuring and test equipment is used.

Operation manual / Spare parts list

Scan Combiflex Handyman 125

5.3 Safety information for maintenance works



Note!

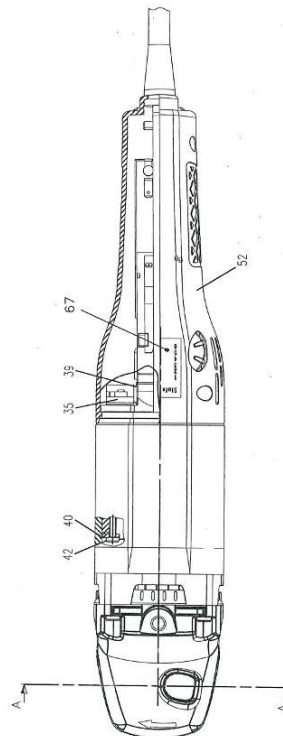
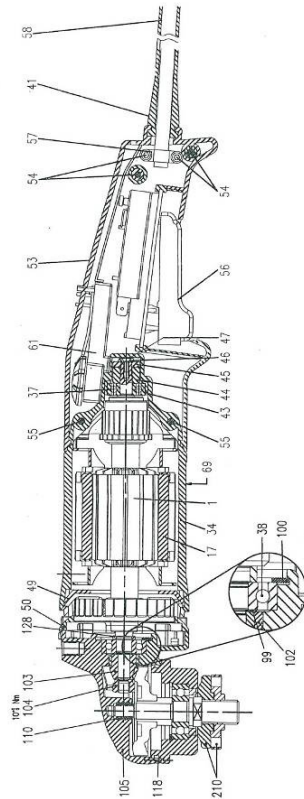
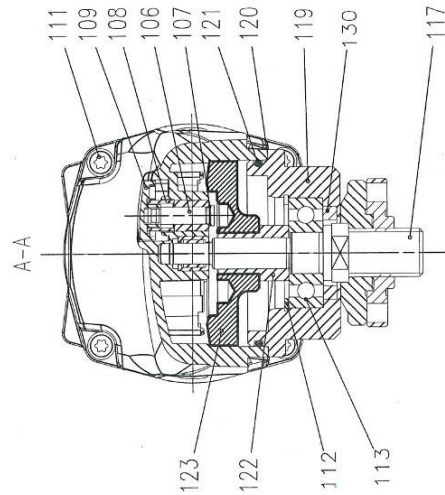
For all works the following can be applied in general:

- *The works must be done by trained personnel only.*
- *Any work performed on the electrical equipment may be carried out by skilled electricians only.*
- *The utilization of original spare parts guarantees the necessary technical specifications.*

Operation manual / Spare parts list

Scan Combiflex Handyman 125

Drawing Motor



Pls. order with item no!

Operation manual / Spare parts list

Scan Combiflex Handyman 125

Item	Article	Description	Quantity
1			
17			
34			
35			
36			
37			
38			
39			
40			
41			
42			
43			
44			
45			
46			
47			
48			
49			
50			
51			
52			
53			
54			
55			
56			
57			
58			
61			
67			
99			
100			
102			
103			
104			
105			
106			
107			
108			
109			
110			
111			
112			
113			
117			
118			
119			

Operation manual / Spare parts list

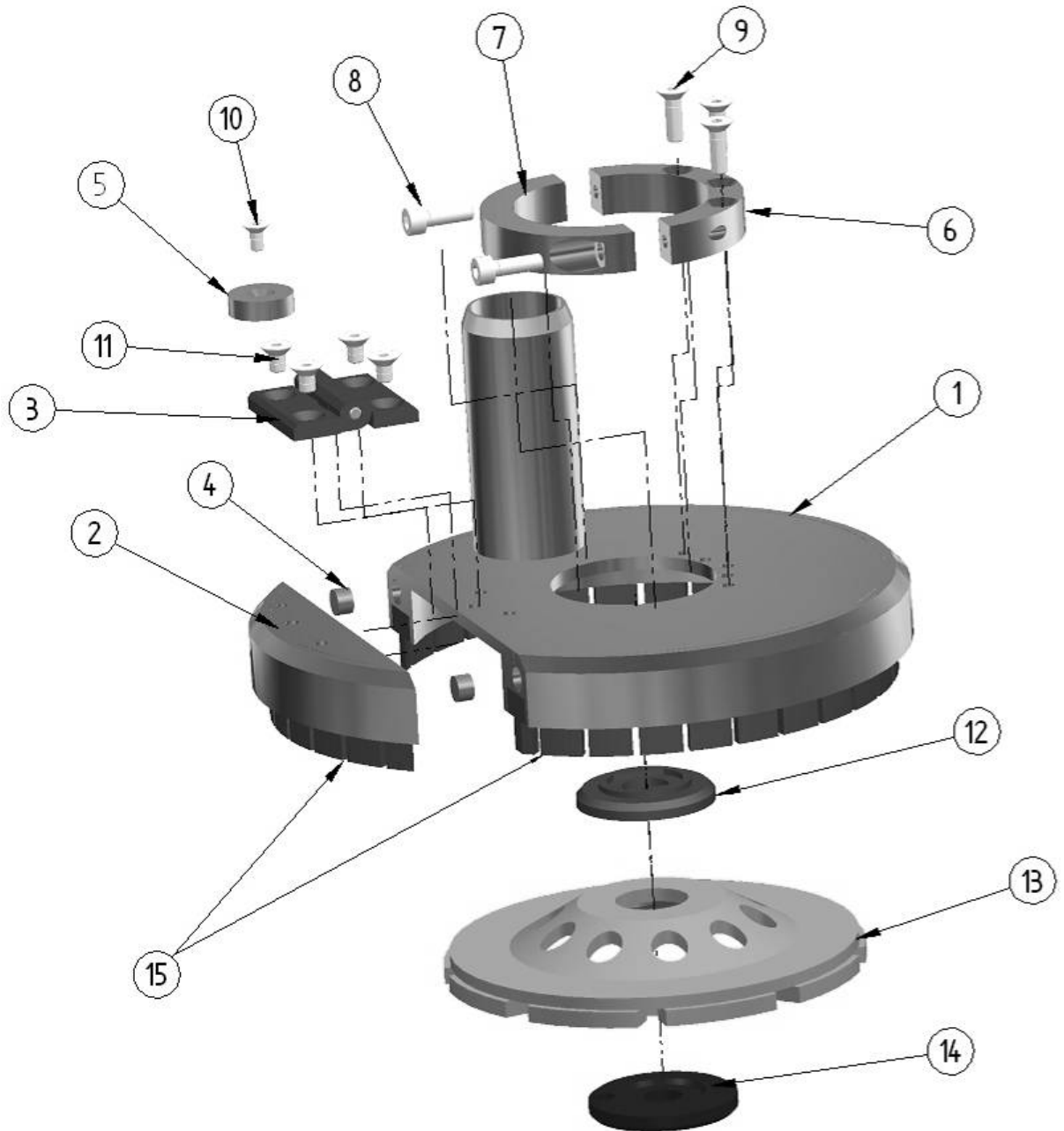
Scan Combiflex Handyman 125

120			
121			
122			
123			
128			
130			
210			

Operation manual / Spare parts list

Scan Combiflex Handyman 125

Drawing Vacuum system



Operation manual / Spare parts list

Scan Combiflex Handyman 125

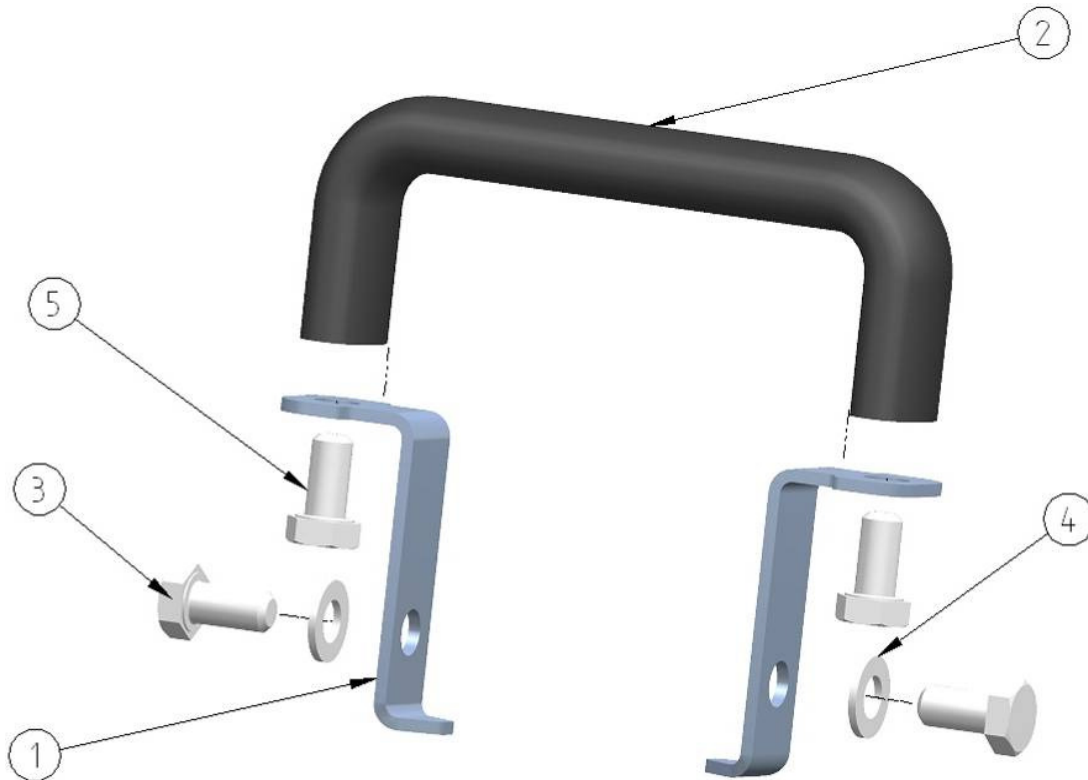
Spare parts list Vacuum system

Item	Article	Description	Quantity
1			1
2			1
3			1
4			2
5			1
6			1
7			1
8			2
9			3
10			1
11			4
12			1
13			1
14			1
15			
16			1

Operation manual / Spare parts list

Scan Combiflex Handyman 125

Drawing U-Handle



Spare parts list U-Handle

Item	Article	Description	Quantity
1			2
2			1
3			2
4			2
5			2

Ordering address:

Address your spare parts order to:

Scanmaskin Sweden AB Phone +46 (0) 31-994970
 Box 187 Fax +46 (0) 31-994870
 437 36 Lindome / Sweden

Operation manual / Spare parts list

Scan Combiflex Handyman 125

CE

Declaration of conformity

We declare ourselves solely responsible for this products conforming with the following standards or standardized documents:

EN ISO 12100; EN 60745, EN 55014-1, EN 55014-2, EN 61000-3-2, EN 61000-3-3.

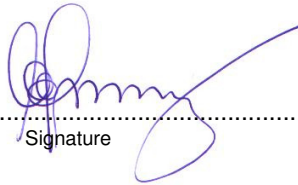
Description Scan Combiflex Handyman 125

Article no. 510060

Scanmaskin Sweden AB
Box 187
437 22 Lindome
Sweden

.....
Date

10. Oktober 2011



Signature

Claes-Göran Bergstrand