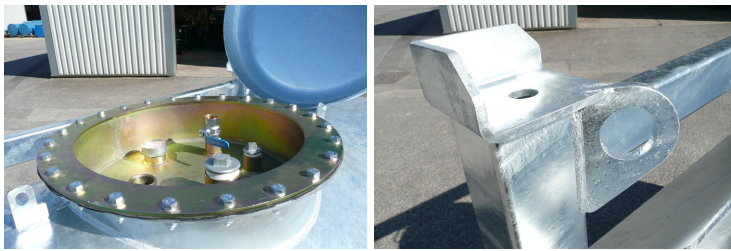




### [ Product Description ]

In developing our range of bunded generator supply tanks we have focused on producing a tough, user-friendly product that provides excellent value for money. With a compact and stackable design, the tanks can be used in a wide variety of applications. Constructed from 3mm & 4mm steel, the tanks are extremely tough and are built to withstand heavy use. The tanks are fully galvanised to provide unrivalled durability and a long service life even in harsh environments.



### [ Features ]

- ▶ **UN / ADR and KIWA Approved**
- ▶ 110% bunded in accordance with current environmental regulations
- ▶ Heavy duty fully welded construction using steel throughout
- ▶ Fully galvanised, for increased durability inside and out
- ▶ Compact & stackable design for efficient storage and transportation
- ▶ Lockable & bolted manway provides access to inner tank for cleaning/inspection
- ▶ Removable inner tank - pressure tested and baffled for improved stability
- ▶ Flanged tank outlets are adapted to suit all applications
- ▶ 2 x 1" suction lines and a 1" return
- ▶ Lockable cabinet housing tank connections and dispensing equipment
- ▶ Safety pressure relief valve, automatic suction breather & overflow valve
- ▶ Side forklift pockets
- ▶ 4 x lifting eyes for safe lifting and moving

### [ Optional Extras ]

- ▶ GPI HP-100 hand pump
- ▶ 12V electric pump (40L/min and 80 L/min models available)
- ▶ Fuel particle filter
- ▶ Flow meter
- ▶ Hose reel with 8m x 3/4" hose
- ▶ Automatic shut-off trigger

### [ Technical Information ]

<b>Depth:</b>	1788mm
<b>Width:</b>	1240mm
<b>Height:</b>	1417mm
<b>Capacity:</b>	950 litres (208 gallons)
<b>Weight (empty):</b>	650kg
<b>Weight (full):</b>	1490kg
<b>Filler neck:</b>	2" BSP
<b>Fuel delivery:</b>	Generator feed/return connections

