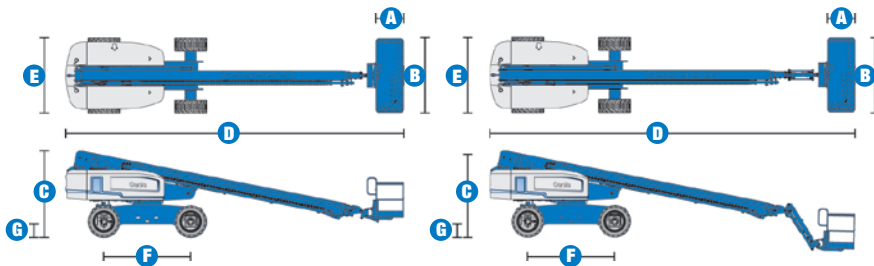


Specifications



MODELS	S™-80		S™-85	
MEASUREMENTS	Metric	US	Metric	US
Working height maximum*	26.38 m	86 ft	27.90 m	91 ft
Platform height maximum	24.38 m	80 ft	25.90 m	85 ft
Horizontal reach maximum	21.79 m	71 ft 6 in	23.32 m	76 ft 6 in
Below ground reach	1.85 m	6 ft 1 in	2.90 m	9 ft 6 in
A Platform length - 8 ft model	91 cm	3 ft	91 cm	3 ft
Platform length - 6 ft model	76 cm	2 ft 6 in	76 cm	2 ft 6 in
B Platform width - 8 ft model	2.44 m	8 ft	2.44 m	8 ft
Platform width - 6 ft model	1.83 m	6 ft	1.83 m	6 ft
C Height - stowed	2.80 m	9 ft 2 in	2.80 m	9 ft 2 in
D Length - stowed	11.13 m	36 ft 5 in	12.19 m	40 ft
Length - transport (jib tucked under)	—	—	11.58 m	38 ft
E Width	2.49 m	8 ft 2 in	2.49 m	8 ft 2 in
F Wheelbase	2.85 m	9 ft 4 in	2.85 m	9 ft 4 in
G Ground clearance - centre	33 cm	13 in	33 cm	13 in

PRODUCTIVITY	S™-80		S™-85	
Lift capacity - 6 ft platform	227 kg	500 lbs	227 kg	500 lbs
Lift capacity - 8 ft platform	227/340 kg	500/750lbs	227 kg	500 lbs
Platform rotation	160°	160°	160°	160°
Vertical jib rotation	—	—	135° (+78° /-57°)	135°
Turntable rotation	360° continuous		360° continuous	
Turntable tailswing	1.42 m	4 ft 8 in	1.42 m	4 ft 8 in
Drive speed - stowed	5.4 km/h	3.3 mph	5.4 km/h	3.3 mph
Drive speed - raised/extended	1.1 km/h	0.68 mph	1.1 km/h	0.68 mph
Gradeability** - stowed 2WD	30%	30%	30%	30%
Gradeability** - stowed 4WD	45%	45%	45%	45%
Turning radius inside	3.66 m	12 ft	3.66 m	12 ft
outside	6.55 m	21 ft 6 in	6.55 m	21 ft 6 in
Controls	12 V DC proportional		12 V DC proportional	
Tyres - RT foam filled	18-625 16 ply		18-625 16 ply	

POWER	S™-80				S™-85			
Power source	Deutz TD2011 L04i 4 cylinder turbo diesel 74 hp (55 kW) Perkins 804D-33 4 cylinder turbo diesel 63 hp (47 kW) Continental TME27 4 cylinder petrol/LPG 74 hp (55 kW)							
Auxiliary power unit	12 V DC	12 V DC	12 V DC	12 V DC	12 V DC	12 V DC	12 V DC	12 V DC
Hydraulic tank capacity	151 L	40 gal	151 L	40 gal	151 L	40 gal	151 L	40 gal
Fuel tank capacity (Diesel)	132 L	35 gal	132 L	35 gal	132 L	35 gal	132 L	35 gal
Fuel tank capacity (Petrol)	114 L	30 gal	114 L	30 gal	114 L	30 gal	114 L	30 gal

SOUND & VIBRATION LEVELS	S™-80		S™-85	
Sound pressure level (ground workstation)	83 dBA	83 dBA	83 dBA	83 dBA
Sound pressure level (platform workstation)	71 dBA	71 dBA	71 dBA	71 dBA
Vibration	<2.5 m/s ²	<8 ft 2 in/s ²	<2.5 m/s ²	<8 ft 2 in/s ²

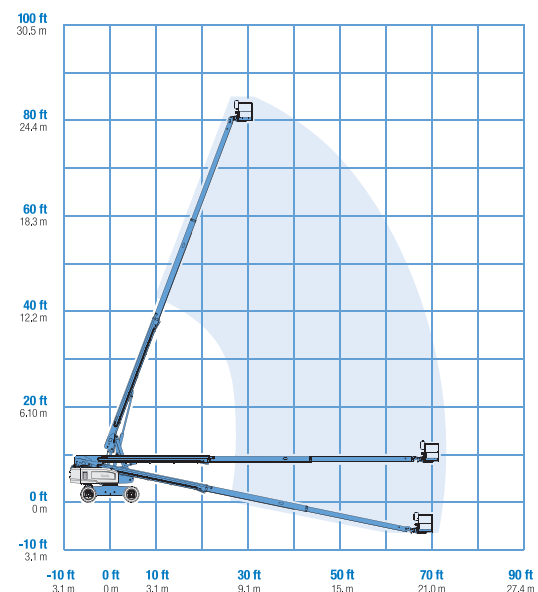
WEIGHT***	S™-80		S™-85	
2WD	16,057 kg	35,400 lbs	17,191 kg	37,900 lbs
4WD	16,103 kg	35,500 lbs	17,237 kg	38,000 lbs

STANDARDS COMPLIANCE

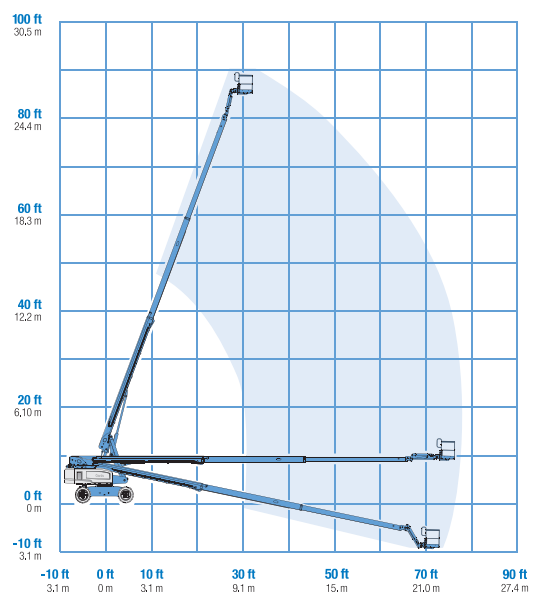
CE EN280, PB-10-611-03

* The metric equivalent of working height adds 2 m to platform height. U.S. adds 6 ft to platform height.
** Gradeability applies to driving on slopes. See Operator's Manual for details regarding slope ratings.
*** Weight will vary depending on options and/or country standards.

RANGE OF MOTION S™-80



RANGE OF MOTION S™-85



Features

EASILY CONFIGURED TO MEET YOUR NEEDS

PLATFORM OPTIONS

- Steel 2.44 m (8 ft) (standard)
- Steel 1.83 m (6 ft)
- Steel 2.44 m (8 ft) tri-entry

JIB OPTIONS

- Non-jib
- 1.52 m (5 ft) jib boom

POWER OPTIONS

- Deutz turbo diesel 74 hp (55 kW)
- Perkins turbo diesel 63 hp (47 kW)
- Continental petrol/LPG 74 hp (55 kW)

DRIVE OPTIONS

- 2x4
- 4x4

AXLE

- Fixed width with active oscillation

TYRE OPTIONS

- Rough terrain, foam-filled (standard)
- Rough terrain, non-marking foam-filled

STANDARD FEATURES

MEASUREMENTS

S™-80

- 26.38 m (86 ft) working height
- 21.79 m (71 ft 6 in) horizontal reach
- 227 kg (500 lb) lift capacity

S™-85

- 27.90 m (91 ft) working height
- 23.32 m (76 ft 6 in) horizontal reach
- 227 kg (500 lb) lift capacity

PRODUCTIVITY

- Self-levelling platform
- Hydraulic platform rotation
- Fully proportional Hall effect joystick controls
- Thumb rocker steer
- Drive enable
- Dual battery system
- AC power to platform
- Horn
- Hour meter
- Tilt alarm
- Descent alarm
- Alarm package (flashing beacon and travel alarm)
- 360° continuous turntable rotation
- Locking low profile turntable covers
- Positive traction drive
- Two speed wheel motors
- Certified load sensor

STANDARD FEATURES cont.

POWER

- 12 V DC auxiliary power
- Anti-restart engine protection
- Auto engine fault shutdown
- Catalytic converter muffler (Continental)
- Engine block heater (Continental)



OPTIONS & ACCESSORIES

PRODUCTIVITY

- 340 kg (750 lb) capacity on S™-80 only with 8 ft platform (add an extra counterweight)
- Platform swing gate
- Half mesh platform inserts with swing gate
- Platform top auxiliary rail
- Weld leads to platform
- Air line to platform
- Power to platform (incl. plug, socket/ground fault interrupt earth leakage on request)
- Hydraulic oil cooler
- Biodegradable hydraulic oil
- Basic hostile environment kit
- Deluxe hostile environment kit
- Aircraft protection package (6 ft platform only)
- Tool tray
- Fluorescent tube caddy**
- Panel cradle package*
- Platform work lights**
- Light package (2 chassis mounted drive lights, 2 platform mounted work lights)
- Lockable platform control box covers
- Second battery
- Tow package

POWER

- Engine gauge package
- AC generator packages
- Diesel catalytic scrubber muffler
- Diesel intake air pre-cleaner
- Engine heater
- Soot filter
- Refinery kit (spark arrestor + electric or mechanical Chalmers valve)
- Additional LPG tank with carrier**

* Available on tri-entry basket model only

**Available aftermarket only

Enquiries from Europe:

Tel: +31 165 519 361

Fax: +31 165 511 148

Email: AWP-InfoEurope@terex.com

Offices:

France

Tel: +33 (0)2 37 26 09 99

Fax: +33 (0)2 37 26 09 98

Germany

Tel: +49 (0)4221 491 810

Fax: +49 (0)4221 491 820

Spain

Tel: +34 93 572 50 90

Fax: +34 93 572 50 91

Scandinavia

Tel: +46 31 57 51 00

Fax: +46 31 57 51 04

The Netherlands

Tel: +31 165 519 361

Fax: +31 165 511 148

UK

The Maltings

Wharf Road

Grantham NG31 6BH

UK

Tel: +44 (0)1476 584333

Fax: +44 (0)1476 584334

Middle East

Tel: +971 4 399 0381

Fax: +971 4 399 0382

Email: AWP.Infome@terex.com

Russia & CIS countries

Tel: +7 495 660 32 30

Fax: +7 495 660 32 29

Email: info@terexrus.ru

Corporate Headquarters:

United States

18340 NE 76th Street

P.O. Box 97030

Redmond, WA

USA 98073-9730

Tel: +1 425 881-1800

Fax: +1 425 883-3475

Distributed By: