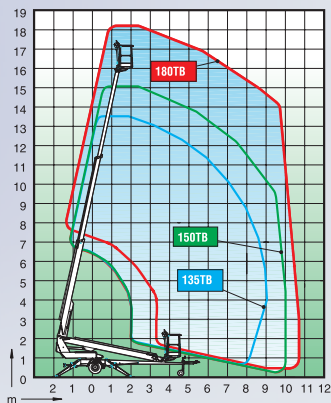


DINO® TB/XTB-series

New battery powered trailers

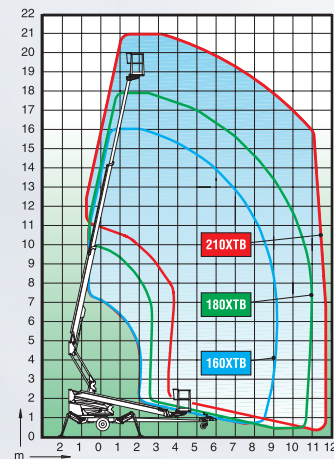
- Work where ever mains power is not available
- Tolerates a wide variation of mains voltage
- Can be operated even when charging the batteries
- With battery powered DINOs you work one day with one charge
- XTB-series with unique "up and over" capability provides easy access over obstacles

DINO® TB-series



	135TB	150TB	180TB
Max. working height	13.5 m	15.0 m	18.0 m
Max. platform height	11.5 m	13.0 m	16.0 m
Max. outreach	9.1 m	10.0 m	10.7 m
Support width	3.8 m	3.8 m	3.8 m
Lifting capacity	215 kg	215 kg	215 kg
Basket size	0.7x1.3 m	0.7x1.3 m	0.7x1.3 m
Boom rotation	cont.	cont.	cont.
Basket rotation	90°	90°	90°
Boom control	proport.	proport.	proport.
Transport length	5.94 m	6.43 m	7.41 m
Transport width	1.78 m	1.78 m	1.78 m
Transport height	2.14 m	2.14 m	2.14 m
Weight	1770 kg	1820 kg	1960 kg
Driving system	std	std	std
AC-socket in the basket	std	std	std
Batteries 235 Ah	std	std	std
DC Motor	std	std	std
Gradeability	25%	25%	25%

DINO® XTB-series



	160XTB	180XTB	210XTB
Max. working height	16.0 m	18.0 m	21.0 m
Max. platform height	14.0 m	16.0 m	19.0 m
Max. outreach	9.1 m	10.9 m	11.7 m
Support width	3.8 m	3.8 m	4.3 m
Lifting capacity	215 kg	215 kg	215 kg
Basket size	0.7x1.3 m	0.7x1.3 m	0.7x1.3 m
Boom rotation	cont.	cont.	cont.
Basket rotation	90°	90°	90°
Boom control	proport.	proport.	proport.
Transport length	5.99 m	6.57 m	7.80 m
Transport width	1.80 m	1.80 m	1.93 m
Transport height	2.29 m	2.29 m	2.29 m
Weight	2180 kg	2240 kg	2600 kg
Driving system	std	std	std
AC-socket in the basket	std	std	std
Batteries 235 Ah	std	std	std
DC Motor	std	std	std
Gradeability	25%	25%	25%